

# Introduction to the Corporate Parenting Panel

Helen Fergusson  
Head of Children's Social Care



# Corporate Parenting Panel Terms of Reference

## Function One

Ensure that the Council acts as a good corporate parent to children and young people in care and care leavers including:

- Children and young people in residential care, foster care, supported lodgings, placed for adoption or placed at home under care planning, placement and case review regulations
- Young people in secure services, or in custody.

# Corporate Parenting Panel Terms of Reference

## **Function Two**

To engage and listen to the views of children, young people and their carers for whom the Council is the parent.

## **Function Three**

To work in partnership with other statutory agencies to drive forward improvements in care.

# Corporate Parenting Panel Terms of Reference

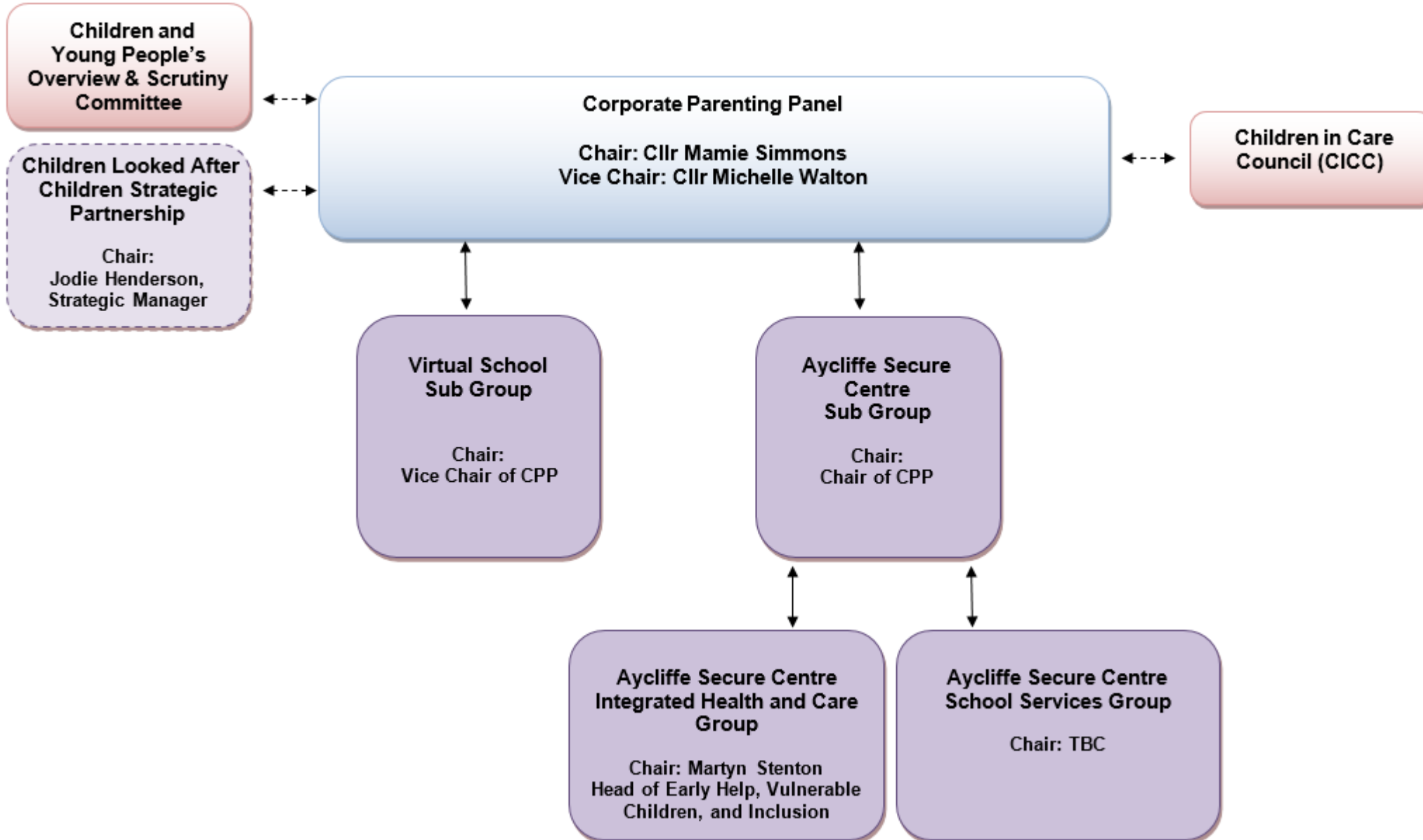
## **Function Four**

To act as the governing body for the Virtual School for looked after children and young people.

## **Function Five**

To act as the governing body for Aycliffe Secure Services, monitoring and ensuring the quality of secure accommodation.

# Governance



# LGA – Key Lines of Enquiry

1. What are the characteristics of our cohort of children in care and care leavers?
2. Do all of our councillors and officers know about their corporate parenting responsibilities?
3. Do our partner agencies understand their role in supporting us as corporate parents?

# LGA – Key Lines of Enquiry

4. How are we giving children and young people the chance to express their views, wishes and feelings?  
How do we know those are being acted on?

5. How do we show children in our care that we have high aspirations for them?

6. Are we providing stable environments for children in our care?

# LGA – Key Lines of Enquiry

7. What are we doing to look after the health and wellbeing of children in our care?

8. What are we doing to ensure that our children in care are not unnecessarily criminalised?

9. What are outcomes like for our care leavers?



# LGA – Key Lines of Enquiry

10. How many children are we placing in out of area placements and why?

11. How are we planning for the future and commissioning services?

12. How well do we support our foster carers?

# Vacancies

## Fostering Panel

- Councillor representation from Corporate Parenting Panel

## Aycliffe Secure Centre Sub Group

- Chair of Corporate Parenting Panel
- Councillor representation from Corporate Parenting Panel

## Aycliffe Secure Centre School Services Group

- Chair of the CPP
- Councillor representation from Corporate Parenting Panel

## Virtual School

- Vice Chair of Corporate Parenting Panel
- Councillor representation from Corporate Parenting Panel

# Vacancies

## Regulation 44 Visits

Coxhoe

Newton Drive, Durham City

High Etherley

West Rainton

Park House, Sherburn Village

Newton Aycliffe

Moorside, Spennymoor

New Lea, Stanley

Orchard House, Sacriston

Barnard - ASC

Durham - ASC

Walworth - ASC

Lumley - ASC

Auckland - ASC

# ANY QUESTIONS?

## CONTACTS:

Head of Children's Social Care: [Helen.Fergusson@durham.gov.uk](mailto:Helen.Fergusson@durham.gov.uk)

Corporate Parenting Panel support: [Jayne.Watson@durham.gov.uk](mailto:Jayne.Watson@durham.gov.uk)

Chair of Corporate Parenting Panel: [Mamie.Simmons@durham.gov.uk](mailto:Mamie.Simmons@durham.gov.uk)