

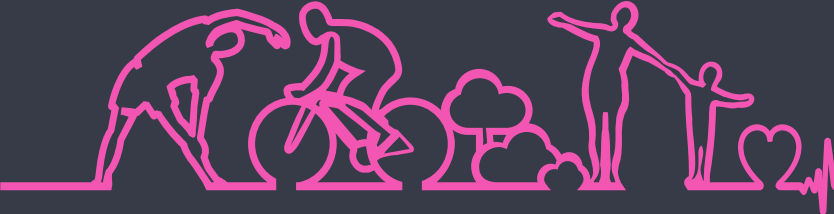
Health & Wellbeing Board

County Durham Inclusive Economic Strategy

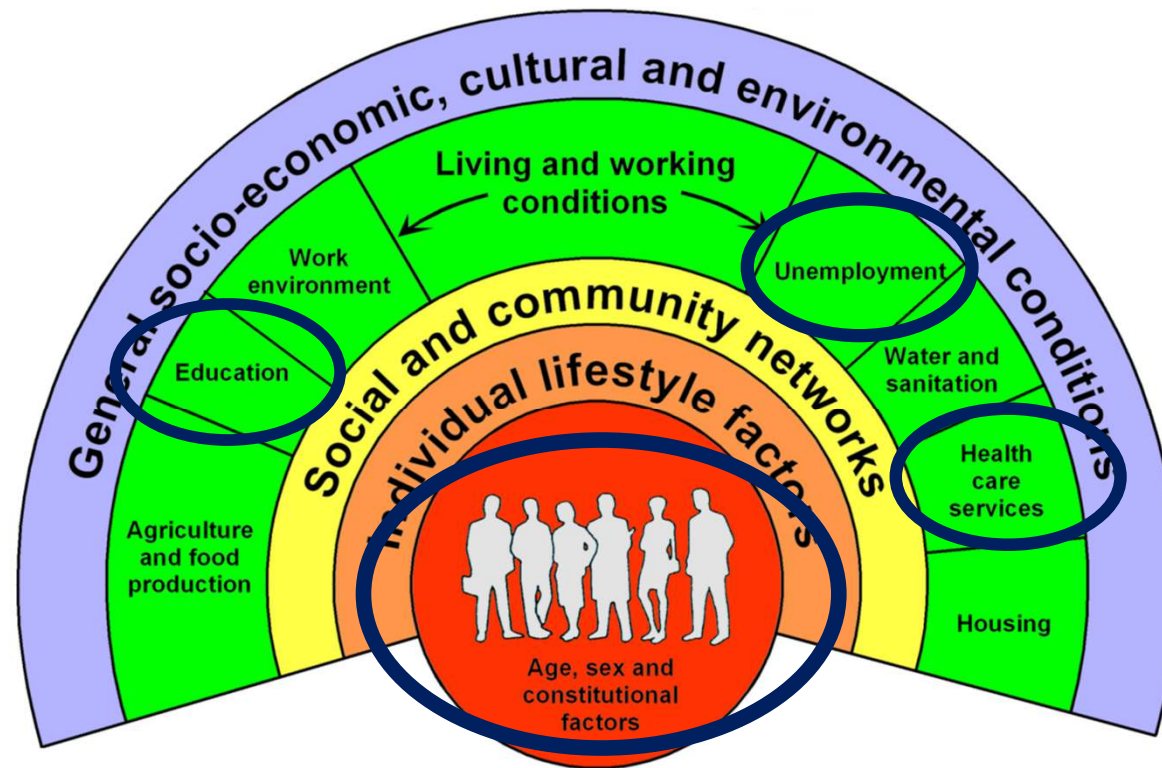
Our Big Econ-versation



Better for everyone



The interdependence of health and the local economy



Source: Dahlgren and Whitehead, 1991



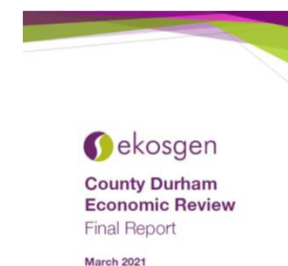
Better for everyone

3-Stage Development Process...

✓ **PROCESS AGREED** by Durham County Council Cabinet in December

1. Economic Review ✓ **COMPLETED**

Independent evidence base



2. Economic Statement ✓ **COMPLETED**

Summary of issues, evidence & structure



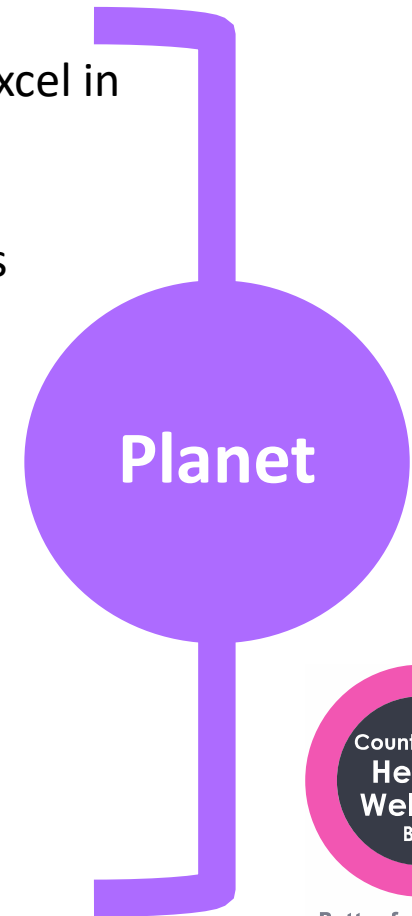
3. Inclusive Economic Strategy

To be developed based on **Our Big Econ-versation**



Proposed Framework...

- People** Supporting people into education, training, jobs, and to excel in business and their careers
- Prosperity** Supporting business innovation, growth, and higher levels of productivity
- Places** Improving places and infrastructure so people and businesses can access opportunities
- Promotion** Promotion of the county and our assets to visitors, investors, and developers
- Partnerships** Working in partnerships to develop an inclusive, greener economy



Better for everyone

Timescales...

January to April

Our Big Econ-versation

- Website www.durhamecon-versation.co.uk
- Surveys [General](#) | [Businesses](#) | [Youths](#)
- Email Econ-versation@durham.gov.uk
- Post **Freepost ECON-VERSATION**
- Telephone **03000 260 000**

May to July

Analysis of feedback and drafting of strategy

Summer to Autumn

Consultation and feedback on draft strategy

Late 2022

Adoption of strategy



Better for everyone

The Inclusive Economic Strategy will...

- **Balance economic growth with the need to reduce carbon emissions** and improve social and economic sustainability
- **Define priorities for growth** and recovery from Covid-19
- **Enhance and create opportunities** across the county
- **Align with the County Durham Vision 2035**, which sets the ambition of generating more and better jobs across the county
- **Align with the Joint Health and Wellbeing Strategy**



Current economic issues...

- The Economic Review and Update identified the following issues relating to health and wellbeing and the economy:
- More than 22,000 residents (30%) in the county are economically inactive due to long-term health conditions, compared to 29% in the North East and 23% nationally.
- Healthcare is one of the largest sectors of employment in the county, with 50,000 people (14%).
- At 12%, the county has a high proportion of people working in caring and leisure jobs compared to 9% nationally
- 5,500 jobs created in health and social care sector in the North East between 2019 and 2020.
- A series of labour supply challenges are now evident in health and care as well as wider sectors of the economy.
- Although exact figures for the number of EU nationals leaving professions are not known in many instances, there is a concern about the impact to date and potential for it to continue to grow.



Health and wellbeing feedback so far...

- High numbers of care worker jobs are available but few in other sectors
- Awareness of young people that the care sector is a valid career option
- Homeworking is an opportunity for people with long-term sickness issues, disabilities, people with caring responsibilities, and young people
- The costs and time needed for childcare impact on the ability of people to access education
- Mental health issues identified by young people as a potential barrier to work
- The high levels of anti-social behaviour by young people in town centres potentially having an impact on people's mental health
- Access to doctors and dentists is identified regularly and the need to match these services to new housing and ageing population has been identified



Some questions...

- How can you help us to promote the conversations?
- How can we speak to people that are facing barriers to work?
- What support do people need in order to overcome health and wellbeing issues and obtain jobs or set-up businesses?
- What priorities should the strategy focus on?

