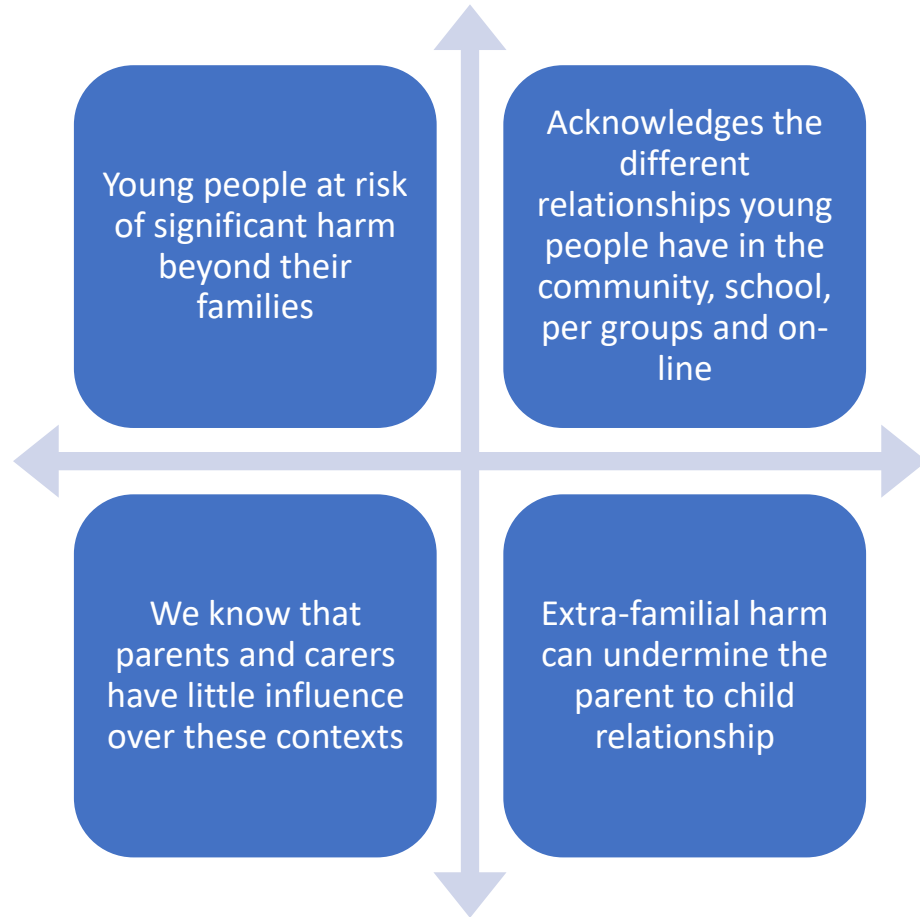


# Contextualised Safeguarding

Lisa Wood Strategic Manager - Countywide Specialist services



# What is it and what is our Vision/Mission



## Our Vision

- A future where young people feel safe beyond their own homes because their communities and our safeguarding system can, and will, protect them from harm

## Our Mission

- Continue to learn about young people's experiences of harm and safety outside the home. Work in partnership with professionals and communities across County Durham, use this learning to increase protection in young people's peer groups, schools and neighbourhoods.



# ASET Team (Adolescent Safeguarding & Exploitation Team)

---

- Team fully operational since Feb 2022
- Works with YP's aged 14-18
  - YP's who are Victims or high risk of Child Exploitation
  - YP's vulnerable to Radicalisation/Extremism
  - YP complex mental health needs – at risk of admission or detained.
  - YP's with complex or multiple needs eg substance misuse impacting on Mental health
- Currently working with 68 YP's
- Providing specialist consultation across Children's Services

# Children who go missing from home/care

- Significant increase in children who go missing from home or care since beginning of covid 19/lockdown
- Recent Ofsted - Jun 2022 Inspection – acknowledged impact of the increase and the need to improve our response
- Additional 2 x dedicated Missing Co-ordinators
- Return to home interviews within 72 hours of YP being found
- Full review - response to children who go missing
- YP's we are really worried about - strategy meetings/multi-agency response and disruption plans



# Child Exploitation (Contextualised Safeguarding)

- Full Systems Review - Learning from Best Practice, Ofsted and inspection feedback – contextualised safeguarding pilot sites
- Working in partnership with the Children's Society to implement Child Exploitation Prevention Toolkit
- Contextualised Safeguarding – level 2 – safeguarding of places and spaces
- Identified pilot site – implement proof of Concept model – Jan 2023



# Next steps and Support needed – Contextualised Safeguarding - Places and Spaces Pilot

- Stanley area
- Community Guardians
- Local services
- Dedicated time
- Share information/intelligence
- Record information
- Collective action and response

