

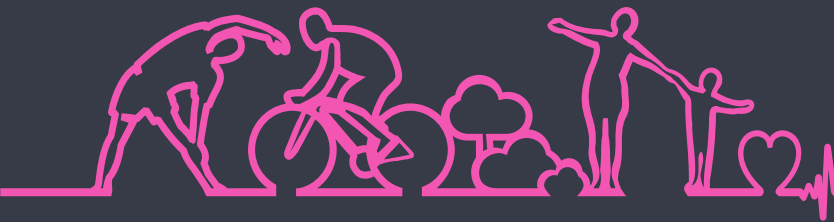
# Health and Wellbeing Board

22 November 2023

Winter Planning



Better for everyone



## Lessons from winter 2022/23

- Demand and pressures unpredictable
- Increasingly complex patients presenting to services
- Covid + numbers unpredictable but generally lower than expected as was flu
- Partners managed winter pressures via the well established LADB with positive relationships
- Workforce resilience and availability a key issue
- Good performance on discharge and the elective recovery programme
- Need all parts of the health and care system to be working together



## Priority areas 2023/24

- Priorities set by Government in letters from Ministers, NHSE and the ICB
- Priorities for 2023/24
  - Ambulance handovers
  - Waiting times in A&E
  - Sustaining the elective recovery programme
  - Hospital Discharge
  - Urgent Community Response
  - Admissions avoidance
  - Supporting the social care market



Better for everyone

## Funding 2023/24

- From the Government with requirements to spend on specific areas and reporting arrangements
- Discharge Fund - £7.5m – only to be spent on additional discharge initiatives – given to Council and ICB as part of the Better Care Fund
- Market Sustainability and Improvement Fund (MSIF) -£4.5m – only to be spent on the social care workforce and providers – given to the Council
- Some Acute Respiratory Infection (ARI) Hub funding
- No additional funding so far for extra beds in hospitals



## Managing winter pressures together

- System leadership via the LADB chaired by CDDFT Chief Executive
- LADB informal catch up every Monday 8am and formal meetings monthly
- Bed meetings in CDDFT 3 times per day
- Transfer of Care Hub meets daily to manage discharges
- Council Winter Planning Group meets weekly led by Public Health
- Oversight by and support from the ICB and the regional Urgent and Emergency Care Network



## Our plans 1

- CDDFT have submitted their Winter Plan to NHSE
- We have invested the Discharge Fund in
  - Additional 8 staff in Hospital Social Work Team
  - Expanded Discharge Management Team
  - Trusted assessment by Therapists in Community Hospitals
  - Extra GP capacity in the GP Hubs working with Emergency Departments
  - Supported housing for people discharged from acute hospitals
  - NEAS additional ambulances
  - Expanded Urgent Community Response
  - Supporting the voluntary sector



Better for everyone

## Our plans 2

- We have invested the MSIF in
  - Extra Intermediate Care capacity
  - Financial support for the social care workforce
  - Home care capacity
  - Extra social work capacity
  - Training care home staff via The Care Academy
- Likely to have 2 ARI Hubs
- Council will continue Welcome Places, money advice and support to the voluntary sector
- Promotion of vaccination



## In development

- Same Day Emergency Care close to completion
- Plans being refined on 7 day working
- Looking at an enhanced Social Work out of hours service and crisis response
- Further work with the Council's Housing Team and housing providers
- Additional transport capacity a key issue
- Looking after our workforce

