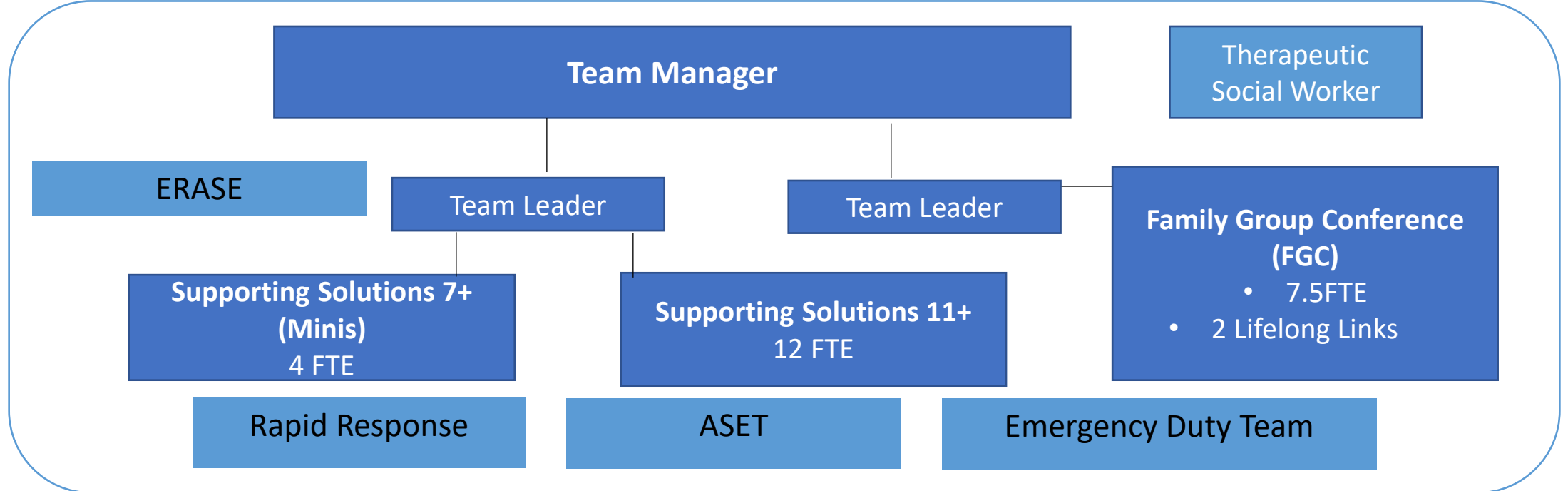


Supporting Solutions and Family Group Conferencing

Deb Loraine – Service Manager, County Wide specialist Services
Lucy Armstrong – Team Manager, Supporting Solutions

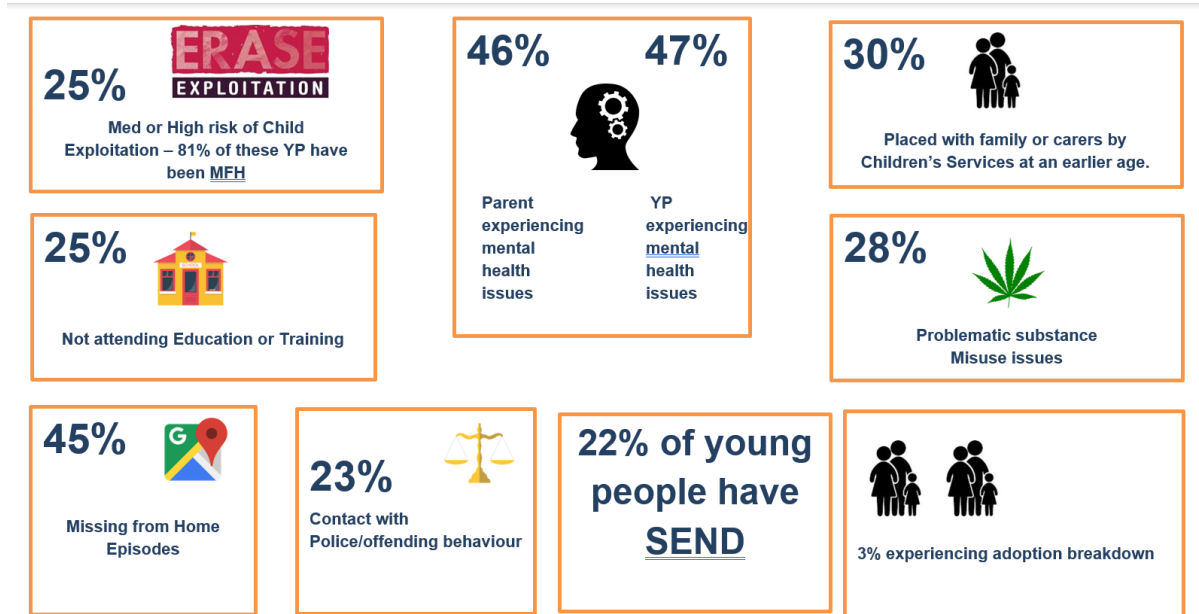


Supporting Solutions



- Supporting Solutions – intensive interventions to young people and families where there is a family breakdown and the young person is on the edge of care or edging towards care. Support to young people who are looked after but there is a plan to return to the care of their family.
- **Family Group Conference (FGC)** – support to families to identify and establish a sustainable plan to meet the needs of children and young people within their family unit. **Lifelong Links** – support to young people who are leaving care to explore their networks
- **Work alongside other County Wide Services**

Factors which led to Young People being on the Edge of Care



There is a significant cross over in the number of Young People on the edge of care and;

- who are also at risk of exploitation and are missing from home
- have SEND and experience instability in education
- experience issues with their mental health
- who are already living out of parental care

Rapid Response

Been admitted, or at risk of admission under the Mental Health Act.

ASET

Age14-17

extra-familial issues,

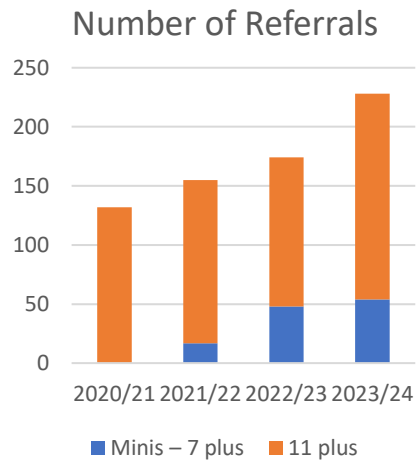
Complex mental health issues Homeless 16/17-year-olds

ERASE

exploitation and missing

Outcomes of children and young people supported 2023/24

302 children and YP supported in total. New referrals for 228 – 54 age 7-11 Minis and 174 age 11-17

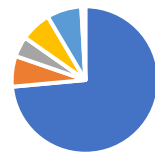


87%
Were supported
To stay at home
or in their long term
placement

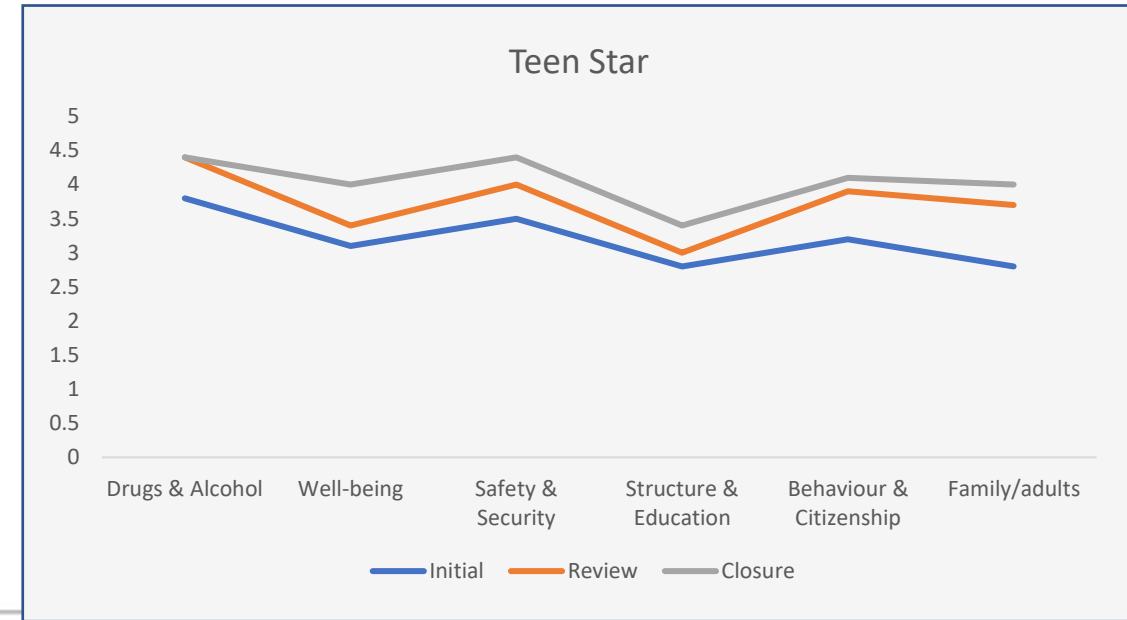
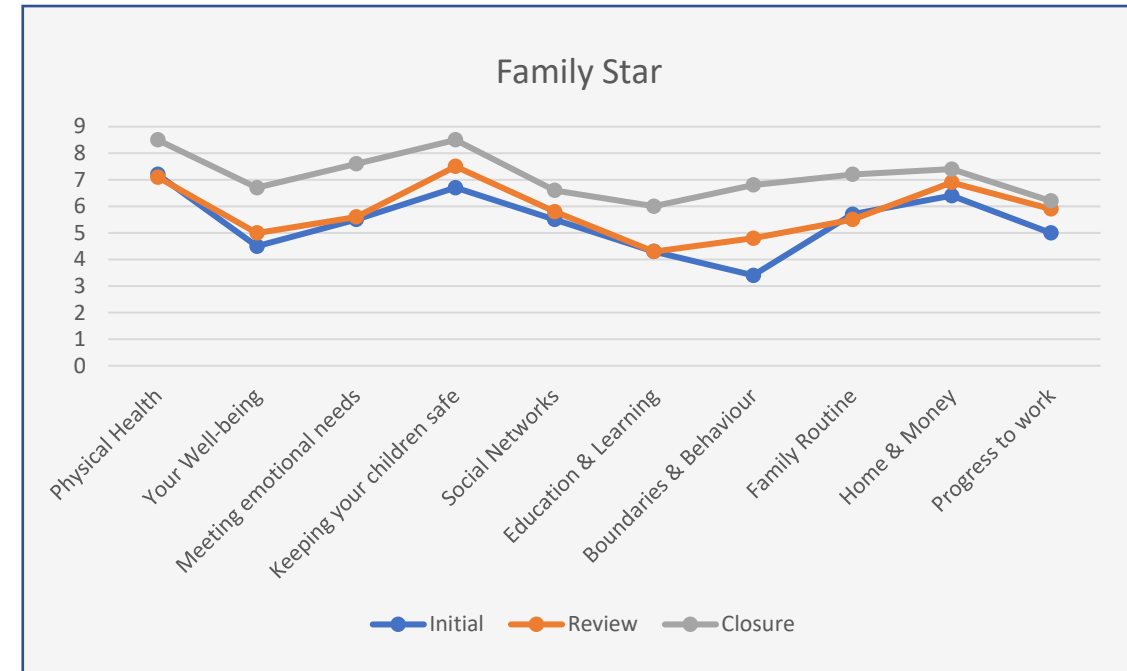
6%
Came into our care

6%
Had to move to a new placement
due to relationship breakdown

Supporting Solutions Closures - interventions ended with 223 C&YP



- At home with parents/family
- CLA with family
- Same foster carers
- CLA moved placement
- New CLA
- Detained under MHA
- Detained in YOI



The Vision

The aim of the service is to work in a multi-agency context to prevent children on the edge of care coming into care

The Supporting Solutions Service will bring together a range of accommodation options, services and outreach to support young people. It is our ambition to develop multi-agency input such as SALT and clinical psychology.

The support is for young people who are looked after or on the edge of care, at risk of family or foster placement breakdown, stepping down from foster placement / residential care to family-based care. Supporting Solutions Service will provide short-term interventions.

We are developing a bespoke Practice Model for the Supporting Solutions Service. We are working closely with Children's Residential Services in the development of the new edge of care home and are looking to develop our offer of sessional support to add further wrap around support to young people and families.