

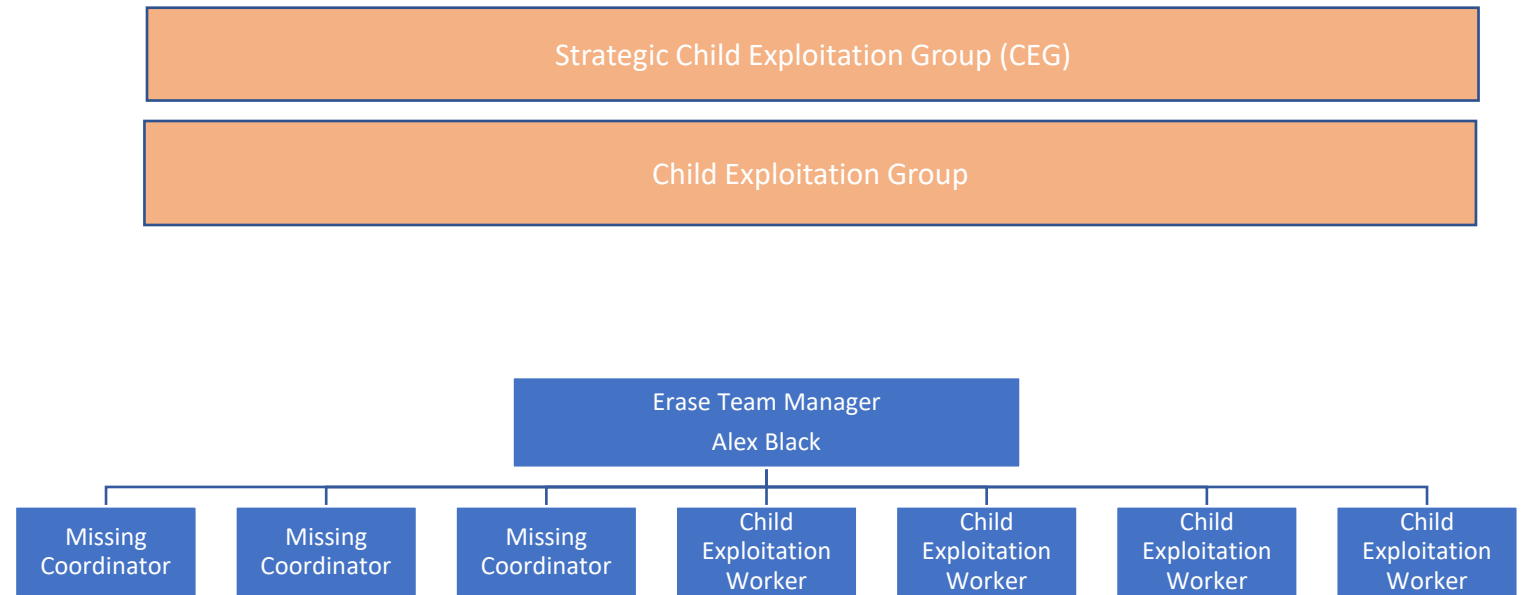
ERASE: Exploitation and Missing

Deb Loraine – Service Manager, Countywide Specialist Services

Debbie Cooper – Team Manager, ERASE



Overview & Function of the Erase Team



Missing

Co-ordination and delivery of services for children who are Missing from Home or our care (MFH).

Exploitation

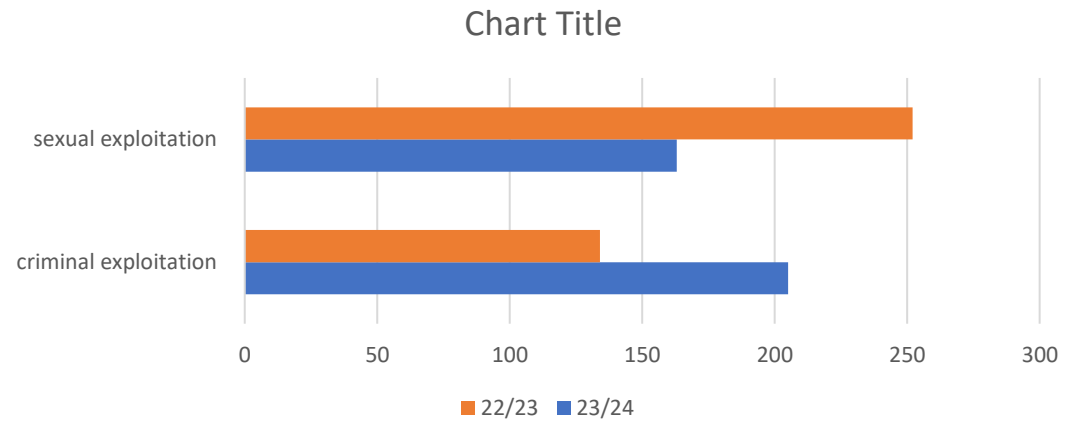
Child Exploitation Workers – offering support and interventions to young people at high risk of Child Exploitation (CE).

Exploitation

Referrals through Child Exploitation triage process:

CEVT Referrals	High risk	Medium risk	Low risk	Total
Child Exploitation (CE) referral received (23-24)	87	252	53	392
Child Exploitation (CE) referral received (22-23)	65	223	98	386

Breakdown of concerns:



Missing Data

No of YP reported Missing in Durham

Status	No YP		No Episodes	
All YP	605	(625)	1997	(1971)
Not known to services (K/N)	276	(306)	493	(433)
Children in Care	160	(142)	1155	(992)
Child in Need	189	(213)	393	(492)
Child Protection	28	(23)	66	(53)

Number of Return Home Interviews:

Status	RHI Offered		RHI Completed		RHI in 72hrs	
	%		%		%	
All YP	95	(92%)	91	(98%)	55	(49%)
Not known to services (K/N)	85	(78%)	74	(97%)	56	(46%)
Children in Care	99	(99%)	98	(99%)	55	(58%)
Child in Need	95	(95%)	91	(97%)	52	(35%)
Child Protection	97	(95%)	98	(97%)	57	(50%)

Missing Demographics

All Children:

- Average age of a child missing was down to 16yrs from 17yrs
- No of children missing down down to 675 from last year 721
- More children continue to go missing from home
- Average number of hours child missing from 64 to 30

Children in our Care

- Average age of a child missing was 16yrs
- No of children missing increased from 142 to 160 last year
- Average number of hours child missing from 22 to 23 hours
- RHI offered consistent at 99%
- Completed increased from 98 to 99%
- Completed within 72hrs increased from 48% to 55%