



Durham

Local Safeguarding Children Board



Annual Report 2012/13

The Effectiveness of Safeguarding in County Durham

Agreed by Durham LSCB October 2012

CONTENTS

Section 1	Introduction	3
Section 2	Role and Function of the LSCB	4
Section 3	Governance Arrangements	6
Section 4	Safeguarding in County Durham – Performance Management	10
Section 5	LSCB Activities	14
Section 6	LSCB Priorities	27
Section 7	The Challenge for the Children & Families Trust in County Durham	28
Section 8	Agency Contributions	30
Section 9	Membership	31
Section 10	Core Business 2012/13	36

This report is available on the LSCB website
www.durham-lscb.gov.uk

Section 1 Introduction – LSCB Independent Chair

Our vision is that every child and young person in County Durham should grow up safe from maltreatment, neglect and criminal activity. Keeping children safe requires a culture, across the agencies, where staff are open to challenge and new ideas. In Durham I am privileged to work with staff at all levels who share my commitment to this vision and who are willing to analyse their own performance to ensure it continuously improves the outcomes for children. By working together we can build upon our strengths and successes and continue to make children safer across the County.

Together, we want to build a safeguarding system where the focus is very firmly on the experience of the child or young person's journey from needing to receiving information, help and support. It means a system characterised by:

- Children and young people's wishes, feelings and experiences being placed at the centre, and truly valuing and acting on their feedback;
- Recognising that risk and uncertainty are features of the system where risk can never be fully eliminated but it can be managed smarter; trusting professionals and giving them the scope to exercise their judgment in deciding how to help children, young people and families;
- A relentless focus on the quality, timeliness and effectiveness of the help given to children, young people and their families and having a good range of help and services to match the variety of needs of children, young people and their families;
- The further development of professional expertise to work effectively with children, young people and their families in order to promote the best outcomes for them; *and*
- Continuous learning and improvement, by reflecting critically on practice to identify problems and opportunities for further improving the system **and publicly reporting progress**.

Durham Local Safeguarding Children Board (LSCB) and its partner agencies are increasingly operating in a difficult environment. Over the last year there has been an increase in contacts to Children's Services, also in the number of assessments, child protection investigations and the number of children subject of a Child Protection Plan. Partner agencies face even greater challenges in the coming year with significant budget cuts and major organisational restructures. Durham LSCB is developing its relationship with the Health and Wellbeing Board and early consideration is being given to clarifying the arrangements for safeguarding both children and vulnerable adults before new structures come in 2013.

Despite these changes, agencies in Durham remain highly committed to improving safeguarding standards. This was recognised in the January 2012 Ofsted inspection of safeguarding and looked after children services which commended the effectiveness of multi-agency work in Durham to keep children safe. Durham LSCB was noted to provide effective leadership on safeguarding and to be making a significant impact on service improvement through the learning from quality audits and serious case reviews. Multi-agency working on neglect was also commended.

In 2012 we said goodbye to two key members of the LSCB team; in February 2012 we said goodbye Chris O'Reilly, Quality and Performance Manager, who for many years provided the LSCB with a range of performance information, led a number of key audits and supported the Performance Management Locality Groups on behalf of the LSCB. In October 2012 we said goodbye to Suzanne Welsh, Business Manager, who for over 6 years provided invaluable support to the LSCB early in its development and led a number of key changes including overseeing a number of Serious Case Reviews, developing the Learning Lessons Review process and provided invaluable advice, guidance and challenge to partner agencies and the Board. Of particular note, Suzanne received national recognition for the development of the Thematic Tool which was identified by Ofsted as being an example of good practice.

This Annual Report sets out the progress and achievements over the last year and also those priority areas which the Board will focus on for the 12 months under a series of themes. At the centre of the plan is a strong emphasis on an integrated approach to early intervention and prevention underpinned by the Children & Families Trust's 'Think Family' Strategy. The plan focusses on the need to continue to prioritise Hidden Harm (alcohol and substance abuse), parental mental health and information sharing and has added new priorities including child sexual exploitation and building a stronger Child Centred Approach.



Fran Gosling-Thomas
Independent Chair

Section 2: The Role and Function of the LSCB

The LSCB is the statutory body for agreeing how the relevant organisations will co-operate to safeguard and promote the welfare of children in County Durham.

In Professor Eileen Munro's report to the government¹ she recommended that the LSCB will, in accountability terms, continue to scrutinise the work of local partners in ensuring that services safeguard and promote the welfare of children and young people. "LSCBs play an extremely valuable role and will remain uniquely positioned within the local accountability architecture to monitor how professionals and services are working together to safeguard and promote the welfare of children. They are also well placed to identify emerging problems through learning from practice and to oversee efforts to improve services in response." The recent 2012 Working Together consultation draft reaffirmed these expectations.

Scope

The scope of the LSCB role falls into three categories:

1. To engage in activities that safeguard all children and aim to identify and prevent abuse and ensure that children grow up in circumstances consistent with safe care.
2. To lead and co-ordinate pro-active work that aims to target particular groups.
3. To lead and co-ordinate responsive work to protect children who are suffering or likely to suffer significant harm.

Function

Thresholds, policies and procedures

Developing policies and procedures for safeguarding and promoting the welfare of children, including policies and procedures in relation to:

- the action to be taken where there are concerns about a child's safety or welfare, including thresholds for intervention.
- working with the Children & Families Trust to ensure that local arrangements for undertaking the Common Assessment Framework (CAF) are clear and when it is appropriate to refer a possible child in need to Children's Services.

Training

Training of people who work with children or services affecting the safety and welfare of children:

- LSCB has a responsibility to ensure that single-agency and inter-agency training on safeguarding and promoting welfare is provided in order to meet local needs.
- LSCBs are required to evaluate the quality of training, and ensure that relevant training is provided. This covers both the training provided by single-agencies to their own staff and multi-agency training organisation.
- Durham LSCB develops, organises and delivers multi-agency training although this is not a core requirement for LSCBs.

¹ The Munro Review of Child Protection- A Child Centred System May 2011

Safe workforce

Safe recruitment, management and supervision of people who work with children:

- Establishing effective safe workforce policies and procedures based on national guidance.
- Ensuring that robust quality assurance processes are in place to monitor compliance, e.g. audits of vetting practice.

Investigation of allegations concerning people working with children:

- Production of policies and procedures to ensure that allegations are dealt with properly and quickly.

Safety and welfare of children who are privately fostered:

- Ensuring the co-ordination and effective implementation of measures designed to strengthen private fostering notification arrangements

Communication and raising awareness

Communicating the need to safeguard and promote the welfare of children, raising their awareness of how this can be best done, and encouraging individuals and partners to do so. This should involve listening to and consulting children and young people and ensuring their views are taken into account in planning and delivering services.

Monitoring and evaluation

Monitoring and evaluating the effectiveness of what is done by the Local Authority and Board partners (individually and collectively) to safeguard and promote the welfare of children and advise them on ways to improve.

Participating in planning and commissioning

The LSCB must participate in local planning and commissioning of children's services to ensure that they take safeguarding and promoting the welfare of children into account:

- This is achieved to a large extent by contributing to the Children and Young People's Plan, and ensuring in discussion with The Children & Families Trust and agency leaders that planning and commissioning of services for children takes account of their responsibility to safeguard and promote the welfare of children.
- The LSCB is the responsible authority for matters relating to the protection of children from harm.

Child Death Review Function

From 1 April 2008 the LSCB acquired the compulsory functions regarding all child deaths. These include:

- Collecting and analysing information about the deaths of all children normally resident in County Durham and Darlington with a view to:
 - Identifying any matters of concern including any case giving rise to the need for a Serious Case Review.
 - Identifying any general public health or safety concerns arising from the deaths of children.

Section 3 Governance Arrangements

Chairing and Membership Arrangements

In June 2011 the LSCB appointed an independent chair of the Board and these arrangements have continued to work well for and have enabled the Board to have an independent strategic lead for safeguarding in County Durham

The LSCB were also successful in recruiting a County Durham resident as lay member to the Board. The lay member participates fully in the work of the Board and has brought a different and local perspective to the work of the LSCB.

The LSCB relies heavily on the contribution of partner agencies to provide a good range of services to children and families. The LSCB continues to be a challenge to ensure agencies providing services to children are members of the Board while maintaining a Board that is both effective and manageable.

In County Durham we have a broad membership including County Council services, health trusts, probation, police, voluntary services, schools, colleges and faith representation.

The LSCB sees the engagement of young people as an extremely important factor in developing the work of the Board. The LSCB actively works with young people using a variety of methods including the use of reference groups.

Relationship between the LSCB and the Children & Families Trust Executive Board

The LSCB role is to ensure the effectiveness of the arrangements made by the partnership and individual agencies to safeguard and promote the welfare of children. Whilst the work of the LSCB contributes to the wider goals of improving the wellbeing of children, it has a narrower focus on safeguarding and protecting children.

- **The LSCB is not subordinate to nor subsumed within the Children & Families Trust arrangements.**
- **The LSCB has a separate identity and is independent.**
- **The LSCB is able to challenge and scrutinise effectively the work of the Children & Families Trust and partners.**
- **The LSCB forms a view of the quality of local safeguarding activity.**
- **The LSCB challenges organisations with an independent voice.**
- **The LSCB must be formally consulted during the development of the Children, Young People & Families Plan.**

Safeguarding is a standing item on the Children's Executive Board agenda. The Trust draw on support and challenge from the LSCB to ensure that the Children Young People & Families Plan reflects both the strengths and weaknesses of safeguarding arrangements and practices and what more needs to be done by each partner to improve safeguarding.

The Children & Families Trust Executive Board needs to draw on the advice and evidence in this report to inform the development and review of the Children, Young People & Families Plan. The recent Children, Young People & Families Plan 2012-2016 confirms that safeguarding children remains a key priority for the Trust and is key theme throughout the four year plan. At the centre of the plan is a strong emphasis on an integrated approach to early intervention and prevention underpinned by the 'Think Family' Strategy which relies on agencies working across traditional boundaries, including age related ones. The work of the LSCB fits well with this particularly in relation to parental risk factors which are known to impact on the safety and wellbeing of children and young people. The plan rightly focuses on issues such as parental alcohol and substance misuse and importantly, the impact of poverty on the incidence of neglect and maltreatment of children.

The recent national bi-annual review and analysis of Serious Case Reviews² reminds us that nationally neglect is a background factor in the majority of Serious Case Reviews (60%) for children of all ages. Neglect remains a priority for the LSCB in 2012-13.

The LSCB Chair/Vice Chair sits on the Children's Executive Board and the Chair of the Children's Executive Board is a member of the LSCB. The Children's Executive Board formally reports to the LSCB Board as a standing item on alternate Board meetings.

Role of Elected Members and Director of Children's Services

The LSCB Chair/Vice Chair reports on an annual basis to the Overview and Scrutiny Committee for Children and Young People. It is provided with the opportunity to both challenge and ask questions about the effectiveness of the Board's activities.

The Lead Member for Children's Services is a member of the LSCB and has a role to ensure that effective quality assurance systems for safeguarding are in place and functioning effectively.

The Corporate Parenting Panel receives regular updates from the LSCB Vice Chair.

The Director of Children and Adults Services, ensures that all Local Authority services engage effectively with the LSCB.

The Director of Children and Adults Services is held to account for the effective working of the LSCB by the Chief Executive and challenged where appropriate by the Lead Member.

² [New Learning from Serious Case Reviews: A Two Year Report for 2009-11](#)

Local Inspection Framework

Professor Eileen Munro³ describes the importance of an inspection system that understands the contribution of all agencies to child protection. The local inspection framework plays an important role in reinforcing the ongoing monitoring role of the LSCB in unannounced inspections ideally based on a multi-inspectorate model should address the input of agencies from the perspective of the child, examining the 'child's journey'.

In 2011/12 the LSCB provided information to Ofsted on the quality and effectiveness of work to safeguard and promote the welfare of children in County Durham as part of the inspection of safeguarding and looked after children's services. The effectiveness of the LSCB itself also informed part of the judgement by the inspectorates.

The inspection praised the Council and its partners in having a "longstanding commitment to improve the life chances of children and young people whose circumstances may make them more vulnerable." The inspectors also recognised the good and effective work undertaken by the LSCB through prioritising neglect.

"Outstanding work by the Council and its partners in the area of neglect has ensured more timely and effective interventions to safeguard children and young people"

The overall judgement for safeguarding was "Outstanding"

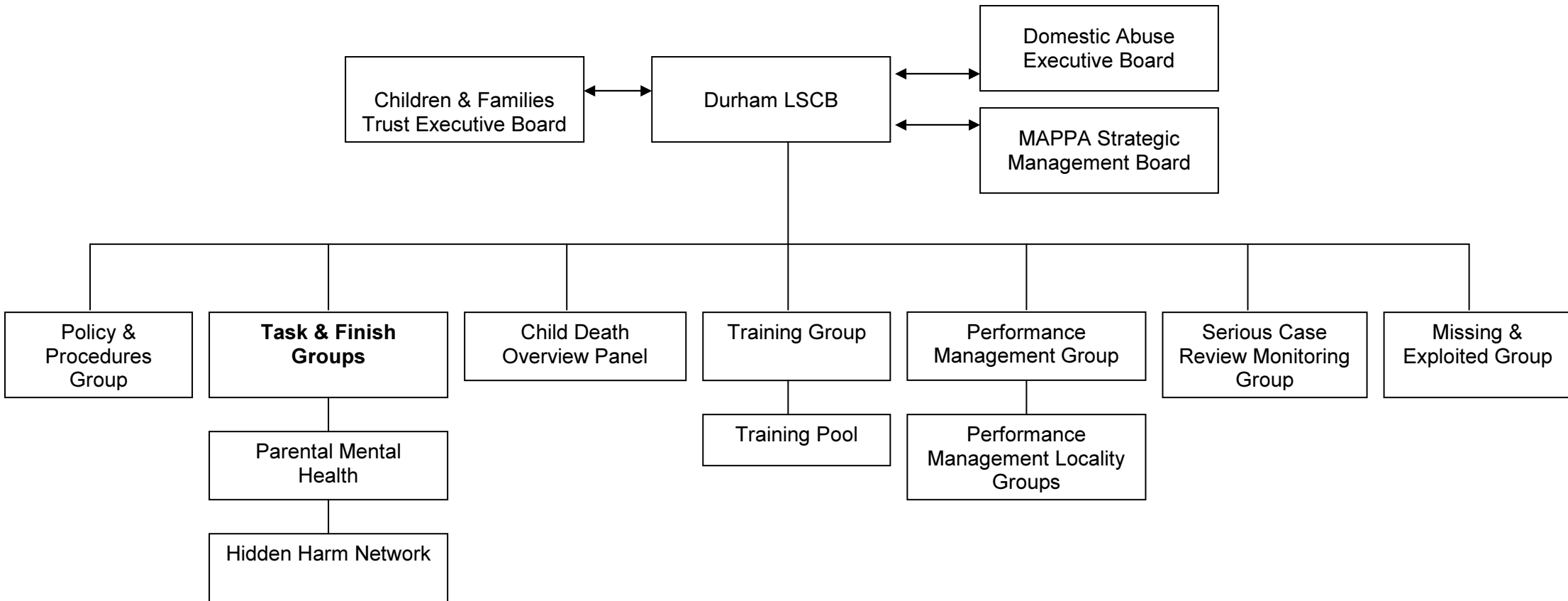
Partners of the LSCB were extremely pleased with this outcome but are not complacent and are committed to not only maintaining high standards but to delivering improved arrangements for safeguarding children in County Durham. In 2013 the LSCB will need to take account of the proposed new Ofsted inspection frameworks for safeguarding arrangements which will be based on an unannounced approach.

³ The Munro Review of Child Protection May 2011

Relationship with the Health and Wellbeing Board

The LSCB is developing its relationship with the Health and Wellbeing Board particularly at a time when there is significant transformation across the Health community, not at least the development of Clinical Commissioning Groups (CCGs). In Durham early consideration has been given to clarifying the arrangements for safeguarding both children and vulnerable adults before the new NHS arrangements are implemented in 2013. The LSCB is confident that this early work will ensure that there will be no gap in safeguarding arrangements as a result of this work.

LSCB, Sub-Groups and Task Groups



Section 4: Safeguarding in County Durham – Performance Management

Safeguarding Activity- the picture in Durham

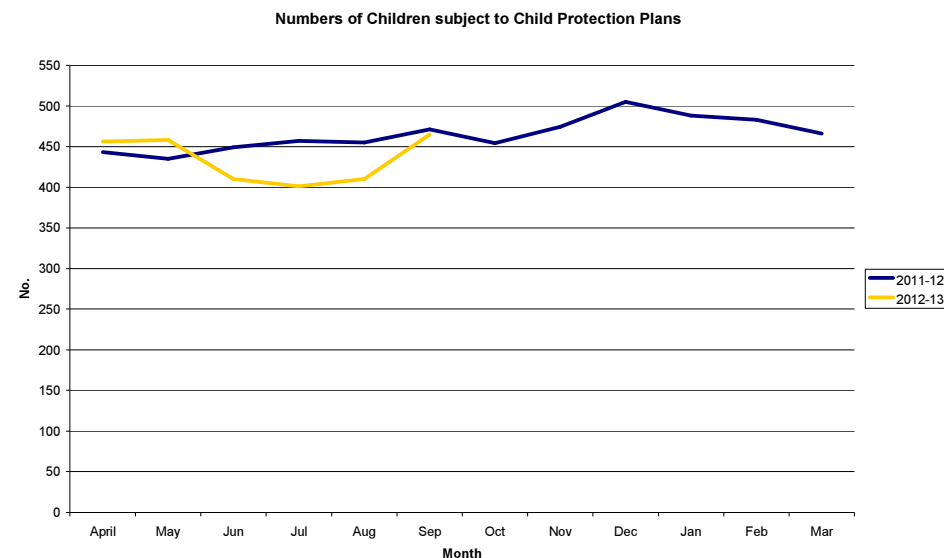
During the year 2011-2012, the LSCB has continued to collect data about child protection, safeguarding and promoting the welfare of children. The following information is illustrative of some of the activities with children and families carried out in 2011-12 compared to that of previous years:

	2008-9	2009-10	2010-11	2011-12	% change from 2008 to 2012
Number of CAFs completed	*	*	1457	674	
Number of Initial Contacts to Children's Social Care	9073	12435	15279	15568	71.6
Number of Referrals	3350	3871	4066	3315**	15.4
Number of Section 47s completed	821	894	752	753	-8.3
Number of Initial Assessments completed	3160	3680	3991	4270	35
Number of Core Assessments completed	874	1204	1434	1572	80
Number of Children with a child protection Plan as of 31 March	288	446	439	456	58.3
Number of Legal Orders					
Police Protection	3	1	1	0	N/A due to low figures
Emergency Protection Order	0	1	1	0	N/A due to low figures
Interim Care Order	44	71	62	83	88
Care Order	204	212	215	237	16.1
Placement Order	40	44	54	83	107.5

*not previously collate ** due to changes in the method of calculation no comparison can be made with historical data

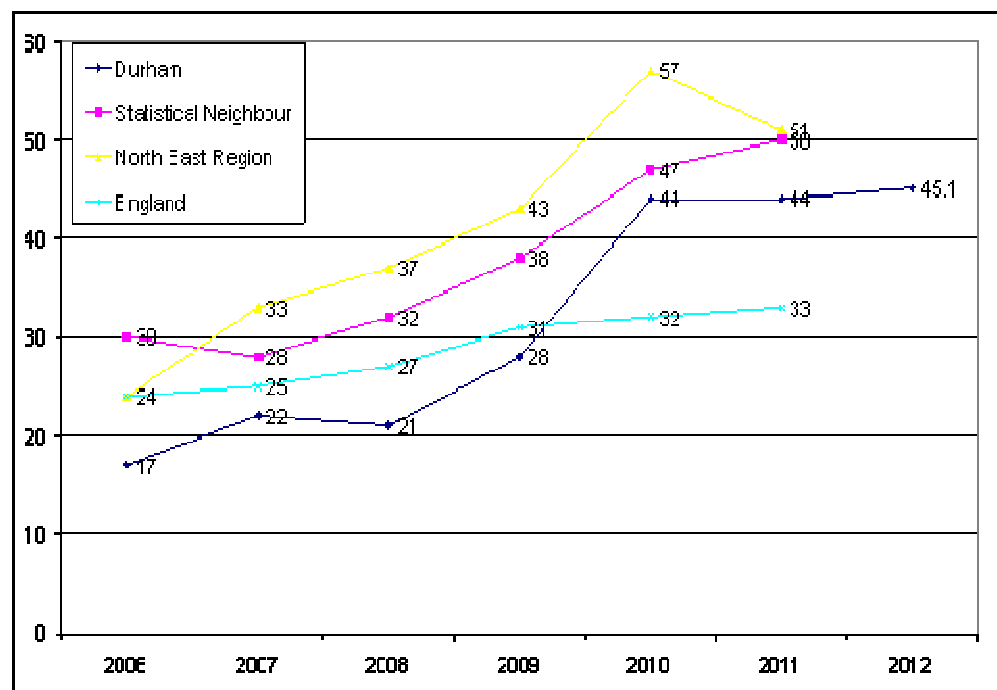
- The number of Section 47 investigations remains static after a significant fall in 2010/11.
- The number of legal orders has kept pace with the rise in numbers of children with a Child Protection Plan.
- The number of reported completed CAFs was lower than last year. This is partly due to underreporting and an increase in the use of pre-CAFs. Between January and August 2012 253 pre- CAFs were completed by the One Point multi-agency locality teams and a further 150 completed by the Youth Offending Service.
- The large increase in referral rates has resulted in the significant increase in the numbers of Initial and Core Assessments.

Numbers of children with a child protection plan has continued to rise since 2008 with significant rises during parts of 2011 and 2012. The highest peak was in December 2011 when the numbers rose to 505. At the end of March 2012 there were 456 children with a plan in place. At the time of this report in September 2012 the number was 465.



Since 2006 the number of children subject to a Child Protection Plan has risen each year, a pattern that is replicated across statistical neighbours and the North East region - across the North East there was a significant reduction from 57 per 10,000 in 2010 to 51 per 10,000 in 2011. Latest comparator data for 2011 shows that while Durham compares well against similar councils in terms of the number of children subject to a plan per 10,000 population under 18 but at was 44.6 this is well above the national average which was 33 per 10,000 population under 18. The LSCB will challenge partners to reduce this rate and to demonstrate that families have access to Early Help services which means that fewer families are taken through child protection processes.

Figure Number of children subject to a child protection plan as at 31st March each year (per 10,000 population aged under 18) 2006 – 2012
(Note: Comparator data for 2012 available October 2012)



Source: Social Services Information Database / DfE Referrals, Assessments and Children who are made subject of a child protection plan 2010/11 (Children in Need census, 28 September 2011)

In April 2011 a new multi-agency LSCB dataset was introduced to the Board. It includes key indicators about the safety and welfare of children and young people young people from a range of agencies rather than focussed on social care processes. The data is now presented annually to the Board and the messages arising from the data would be considered in identifying the LSCB priorities to be taken forward into the next planning year.

Additionally, the LSCB collects a wide range of performance data from child protection conference activity which provides rich evidence to indicate how well multi-agency child protection arrangements are working in Durham. The LSCB is also routinely presented with an analysis of the Top Ten performance indicators at each meeting of the Board.

The following provides a summary of all the data collected by the LSCB during in 2011-2012: Where appropriate reference is made to more up to date information to September 2012.

- Between February 2011 and March 2012 303 Initial Child Protection Conferences were held relating to 610 children and young people. Over 50% of these related to children under 5 years old including 79 (13%) unborn babies. 638 review conferences took place.
- At the end of March 2012 86% of Initial Child Protection Conferences were held within timescales which is a dip in performance from the previous year's figure of 99%. Figures for the first quarter of 2012/13 show an improvement in performance at 89%.
- There is increased involvement of GPs in Child Protection Conferences. Significant improvements continue to be made in respect of GPs sharing reports with parents on time, rising from 12% in 2010/11 to 36% in 2011/12. Latest quarterly figures show a further rise to 48% demonstrating the impact the LSCBs targeted work has achieved.
- There is increased participation of young people in Child Protection Conferences. Practitioners are exploring different ways in which to ensure this area of work is strengthened so that young people's views are taken into account fully.
- Information collected indicates that gun and knife crime and gang activity is not an issue that needs to concern the LSCB at this time.
- During 2011-12 the Police investigated 145 e-safety offences.

The data highlights the following key themes which need further improvement and or analysis:

- Domestic abuse continues to feature highly in 60% of cases leading to Child Protection Plans and continues to be a major challenge, an increase on last year's figure of 50.2%.
- Parental mental ill health has consistently featured highly in Child Protection Plans. For the period February 2011 to March 2012 there was a reduction of nearly 3% on the previous year's figure of 27.9% to 25%. This is now the highest single risk factor.
- Alcohol and drug misuse continues to feature highly as a risk factor in 67% of child protection cases. During 2012-12 the LSCB carried out an evaluation of how agencies work together to protect children from Hidden Harm. The outcome of this is reported later in this report.
- Numbers of children privately fostered made known to children's social care has significantly increased from 19 in 2010/11 to 31 in 2011/12. This is due to targeted work to raise awareness amongst professionals and the public. Ofsted have identified this group of children for further inspection work in 2012-13.
- 573 children were reported as missing, an increase on last year's figures. In 2011 the LSCB establish protocols to safeguard these vulnerable children and through the work of the Missing and Exploited sub-group monitors the impact of the new policy and procedures in protecting children and young people.
- The number of young people subject to restraint who received an injury in secure settings has reduced from 218 in 2010/11 to 158 in 2011/12 indicating improved strategies in managing young people in such settings.
- Police reports indicate that there has been an increase in offences of internet grooming. Data was collected for the first time in March 2012 as part of the LSCB dataset; it was noted that there were 145 incidents investigated by the police. The LSCB also captures other information through the monitoring function of the e-safety designated officers and an annual e-safety audit which assesses how LSCB partners are complying with the agreed strategy to keep young people safe online

Performance Management Framework

The LSCB has a robust performance management framework to assist in understanding the manner in which agencies work both individually and together to safeguard the welfare of children and young people in Durham.

Information is obtained from a variety of sources including:

- Audits.
- Serious Case Reviews/Management Reviews.
- Self Assessment.
- Concerns and complaints from children and families.
- Data collection at child protection conferences and core groups that assists the LSCB to understand the effectiveness of these crucial decision making activities.
- Multi-agency safeguarding dataset.
- Direct contact with hundreds of multi-agency staff across the County via training, workshops and conferences.

The LSCB has a Performance Management Sub-Group, which examines issues on a countywide and strategic basis and three Locality Groups, which look at improving performance across the professional disciplines on a local operational basis. All four groups meet quarterly and work to an agreed action plan.

Children with a Child Protection Plan by Category

Category of Abuse	31/01/09	31/01/10	31/01/11	31/07/11	30/09/12
Neglect and Likelihood of	169 (45%)	258 (48%)	314 (68%)	284 (66%)	293 (62.6%)
Physical and Likelihood of Physical	98 (26%)	130 (24%)	145 (31.5%)	118 (27%)	86 (18.4%)
Emotional and Likelihood of Emotional	67 (18%)	95 (17%)	75 (16.3%)	102 (23%)	51 (11%)
Sexual and Likelihood of Sexual	41 (11%)	58 (11%)	27 (5.8%)	20 (4.6%)	38 (9%)

(one child may have several categories)

The percentage of children on the List as a result of Neglect has remained high since January 2010. Currently over 62% of children on Child Protection List is because of neglect.

In recent years the incidence of children subject to a Child Protection Plan because of Sexual Abuse fell significantly compared to 2010 but in 2012 there was a rise. This will be monitored closely by the LSCB performance groups.

Performance Management Activities 2011-2012

- Monitoring and evaluating the effectiveness of safeguarding arrangements within and across LSCB agencies.
- Utilising the three Performance Management Locality Groups to address practice issues and find solutions to problems that are highlighted through the analysis of data.
- Ensuring staff and volunteers from all agencies receive training to enable them to fulfil their safeguarding responsibility.
- Continuing to check that all agencies comply with safe recruitment practices.
- Focussing on improving the timeliness of invitations to Initial and Review Child Protection Conferences.
- Monitoring the numbers of completed CAFs.
- Monitoring the ways in which children and young people's views are obtained including working with safeguarding teams to improve children's engagement in child protection conferences.
- Working with GPs to improve their involvement in safeguarding processes.
- Continuing the focus on increasing the production of single-agency and multi-agency chronologies to ensure historical information on children subject to Child Protection Plans is routinely used by all agencies to inform risk assessment and child protection planning.
- An evaluation of how agencies work together to address safeguarding issues as a result of parental substance misuse and domestic abuse.
- Strengthening procedures in relation to sharing information and managing assessment when a known sex offender is found to be residing with families.

- Developing agreed single point of contact to ensure that specialist services such as mental health, drugs and alcohol services are invited to child protection conferences where appropriate.

Increased Involvement of Young People in Child Protection Conferences

Through the data collection there has been increased focus on the level of involvement children and young people have in the arrangements to formulate their individual Child Protection Plans. During 2011/12 performance has continued to improve with a variety of activities undertaken engage with children and young people. Latest quarterly figures show that where children are deemed old enough their views are actively sought.

Consultation with Young People

In 2010 /11, the LSCB actively sought children's views on wider safeguarding issues in Durham and a consultation exercise with young people focussed on the priorities of the LSCB. Consultation enabled the LSCB to take into account the views of 250 young people aged 11 to 19 years on domestic abuse and neglect.

In 2011/12 further consultation activity took place with young people via a range of activities including a blog regarding the priorities for the LSCB during this year: Young people gave their views on the following issues identified by the Board.

- Sexual Exploitation
- Early Intervention
- Mental Health
- Information Sharing

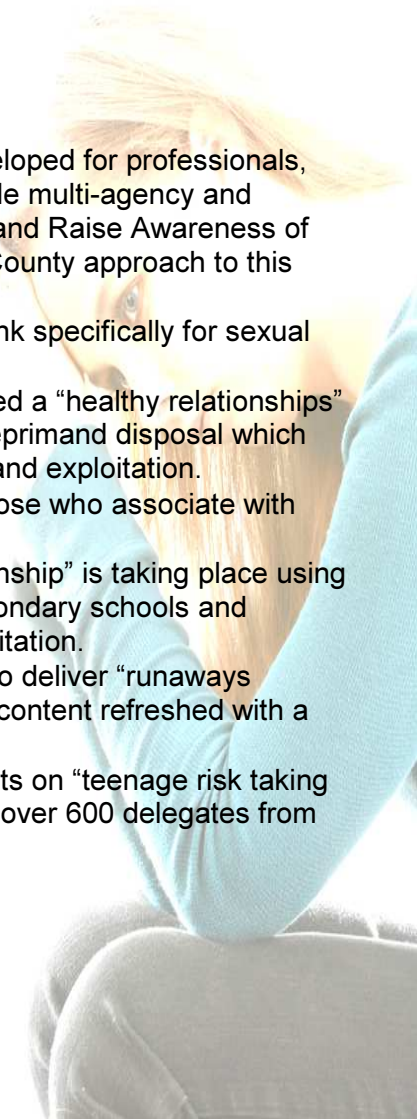
Feedback from young people has fed into the Board's priorities for 2013/14. Work with Investing in Children has indicated that the most effective way of improving young people's engagement with the work of the Board is by establishing a young people's reference group. A small representative group of the Board has been identified to meet with young people on a regular basis to take forward this approach in 2013.

Development work to take forward the Board's priorities

Child sexual exploitation

This development work was linked to the work stream for missing children from home and care, which is a significant risk indicator for sexual exploitation. During 2011/12 activity in this area included:

- There is an LSCB sub-group for Missing and Exploited children (MEG) where strategic, operational and performance issues for missing children and exploitation are discussed quarterly.
- A multi-agency self-assessment tool has been developed and used to undertake a gap analysis for the direction of future MEG work.
- The MEG agreed a multi-agency training plan; roll out has commenced.
- A CSE outreach worker has been appointed by Barnardos and supports victims and safeguarding teams.
- Work has commenced on recruiting specialised foster placements for CSE victims.
- Multi-agency analysis of the County profile of sexual exploitation has been presented to the LSCB to inform training and practice.
- Revised child protection procedures for sexual exploitation and missing children procedures have been developed together with a risk matrix for CSE victims.
- An information sharing record for offenders, including information about vehicles and locations, linked to sexual exploitation, has been introduced. This multi-agency record is submitted directly to the police.
- Awareness raising leaflets have been developed for professionals, victims and parents/carers and are available multi-agency and includes the strap line "ERASE "(Educate and Raise Awareness of Sexual Exploitation) which embraces the County approach to this problem.
- The LSCB website now has a navigation link specifically for sexual exploitation.
- The Youth Offending Service has introduced a "healthy relationships" programme for teenage offenders at pre-reprimand disposal which links sexual violence, teenage pregnancy and exploitation.
- The use of police harbouring notices for those who associate with missing children has been introduced.
- Educating children about a "healthy relationship" is taking place using social norms approaches, for pupils in secondary schools and captures the risk indicators of sexual exploitation.
- The Community Support Team continues to deliver "runaways workshops" in secondary schools with the content refreshed with a CSE focus.
- Countywide LSCB awareness raising events on "teenage risk taking linked to sexual exploitation" has attracted over 600 delegates from public, private and voluntary sectors



Parental Mental Health

Parental mental health, as a risk factor, features in approximately 40% of all Initial Child Protection Conferences. In 2011/12 development activity has included:

- Professionals across child safeguarding and mental health teams have been consulted to identify development work to assist their practice. Consistent themes that have emerged include; understanding organisational structures, contact points, thresholds and pathways, risk assessment processes which embrace the “Think Family” agenda, information sharing, team networking and staff safety.
- A task and finish group of senior managers has developed an action plan to progress the professional’s feedback to improve engagement and practice.
- Service structures/leaflets, single points of contact and pathways are being developed and will be communicated widely.
- Audits are planned to examine safeguarding practice and assess the approach to joint working. Findings will be considered by the task and finish group.
- Audits will also focus on initial screening, to ensure that adults with mental health problems who are parents are identified and that there is multi-agency contribution to subsequent assessments.
- LSCB training has been refreshed in line with the action plan and professionals feedback.
- Learning from local and national Serious Case Reviews has been considered in the development of the action plan.
- A multi-agency self-assessment report has been developed which reflects good practice nationally and will be used in a gap analysis for future work.

Hidden Harm

Previous work of the LSCB had focussed on the interface between safeguarding and early intervention work and the operational links with the adult services of drugs, alcohol and domestic abuse.

An evaluation of the outcomes of this work was presented to the LSCB, with recommendations for future work. This included:

- Understanding the links between the performance management frameworks of the LSCB and One point service, to ensure consistency in data collection and contribution of adults services to the “hidden harm” agenda.
- Reinforcing the use of single points of contact for adult services to enable their contributing to Initial and Review Child Protection Conferences and information exchange.
- Progressing team networking between children’s services teams and drugs, alcohol and domestic abuse services.
- All children’s services teams received training on the use of the alcohol risk screening tool and brief interventions to assist in identifying those parents who may need additional support.
- Development of pathways into the drugs, alcohol and domestic abuse services to ensure that professionals are clear about thresholds and points of contact.
- Clarifying the contribution of professionals from the drugs, alcohol and domestic abuse services to the Common Assessment framework and Team Around the Child/Family approaches.

Early Help /Think Family

In 2010/11 a number of national strategic reports highlighted the value of early intervention in the protection of children. Professor Eileen Munro also introduced the concept of “early help”, focussing on a child’s early years in life and also focussing on early action, if problems were to emerge. Professor Munro identified that the LSCB should take account of the effectiveness of the help being provided to children and families and the effectiveness of multi-agency training to safeguard and promote the welfare of children.

During 2011 multi-agency integrated teams were launched across County Durham, with a focus on early intervention with 10 ‘One Point Hubs’ put in place in localities. At the same time there was a revision of child in need procedures and multi-agency working practices and the establishment of an agreed dataset for the service.

The LSCB undertook an initial scoping exercise to understand the different activities and strategies that were in place and in development in Durham.

An action plan has been developed to take forward this priority area of work in ensuring the promotion and evaluation of early help.

Initial work has focused on establishing links and understanding the work of the newly established ‘One Point’ service. Meetings with key personnel commenced in March 2012.

A dataset has been agreed with relevant partners to identify the source of referrals to the Initial Response Team.

LSCB training for early years providers commenced in January 2012.

LSCB training also promotes CAF and provides information to assist practitioners

Further work is planned in 2012/13 including;

- Audit of no further action (NFA) cases.
- Supporting practitioners to understand the links to the Preventative Strategy and Think Family initiatives.
- Through LSCB training, raise awareness and promote joint working between key services.
- Link with the work of the Mental Health Task Group and the Hidden Harm Network.
- Produce a performance report concerning the effectiveness and impact of joint working including attendance at child protection meetings of adult services.
- Ensure young people’s views are sought to influence the action plan.

Information Sharing

Information Sharing has been a priority for the Board in since August 2010. A multi-agency strategy was developed to improve the quality and approach to information sharing to protect children. Key areas include:

- Importance of leadership in developing and maintaining a culture where relevant information is shared appropriately;
- Improved awareness and confidence of staff to share information;
- Publication of champions and contacts;

- Review of guidance and protocols and launch of multi-agency chronologies;
- Performance Management.

LSCB Partner agencies completed the action plan in early 2011.

Following this a series of one to one meetings with senior partners took place to examine actions undertaken by each agency in more depth. This culminated in a final report to the Board in October 2011 that demonstrated the extent to which agencies are driving forward the importance of sharing and seeking information to safeguard children.

This process has provided a deeper understanding of the efforts made by partner agencies to ensure effective information exchange and monitor compliance and practice.

All agencies that took part are committed to improving information sharing within and between agencies, some are further along the journey than others and some have further to travel.

It is recognised that ensuring information standards is a continual process and that information sharing needs to be addressed at various levels and in various ways including through training.

Board partners have taken a committed and thorough approach to raising awareness of the importance of information sharing.

There is ample evidence that agencies have taken opportunities to develop and improve systems to assist information sharing and improve joint working. Some developments have involved major restructuring others have simply required imaginative thinking a willingness to apply a more effective way of working.

Agencies have used a variety of methods to provide a consistent message to staff and managers. The extent to which this increased awareness has improved practice is subject to various audit and quality assurance processes.

LSCB Communication Strategy

The LSCB recognises that it has a statutory obligation to communicate and raise awareness of its activity. The LSCB has agreed strategic aims and objectives of a strategy and has prioritised initiatives to be progressed. This work has involved:

- The development of an LSCB newsletter. This is circulated widely across partner agencies with features on the work of the Board, policy and practices both locally and nationally.
- The development of an annual communication plan reflecting local and national events which may require some comment from the LSCB.
- The further development of the LSCB website.
- Improving information for and communicating with children and young people.

LSCB Policies and Procedures

The Policy & Procedures Group is a standing sub-group of the LSCB. The purpose of the sub-group is to undertake the work of the LSCB in relation to the development of policies and procedures for safeguarding and promoting the welfare of children.

The following revisions have been completed and were added to the LSCB Child Protection Procedures in September 2011:

- Development of procedures for managing difference in professional opinion.
- Strengthened the procedures for sharing reports with parents/carers.
- Durham LSCB no longer use multiple and likelihood categories of abuse in child protection conferences in line with Working Together to Safeguard Children.
- Updated Female Genital Mutilation procedures to reflect the Foreign & Commonwealth Office Multi-Agency Guidance.
- Revision of the Safeguarding Disabled Children procedures following the work of the Task & Finish Group.
- Updated the Trafficking of Children procedures to link to the London SCB guidance and toolkits for safeguarding trafficked children.
- Updating the AIM (Assessment, Intervention and Moving on) procedures which concern children and young people who sexually abuse other children and young people.
- Sexual exploitation procedures including the sharing and management of information about individuals or situations that may assist in the identification of perpetrators.

The LSCB website has been reviewed and updated to improve access and navigation. A facility to monitor the use of the website by practitioners has been established which will help the Board to gauge how well the site is used across the partnership. Updates to the LSCB procedures in 2012 will be put back to take account of the consultation on the new Working Together 2012.

Other work progressed by the sub-group includes:

- A review into the number of strategy meetings held and the conversion rate to Initial Child Protection Conferences which resulted in a draft practice note being developed to ensure that multi-agency discussions were timely and strategy meetings did not take place where not needed.
- Exploring the need to have a policy in place regarding the service user recording of child protection meetings.
- A response was prepared to the consultation draft for Child in Need and Common Assessment Framework (CAF) procedures.
- Clarification of the role of students and foster carers attending child protection conferences.
- Responding to the consultation on the draft Working Together 2012.

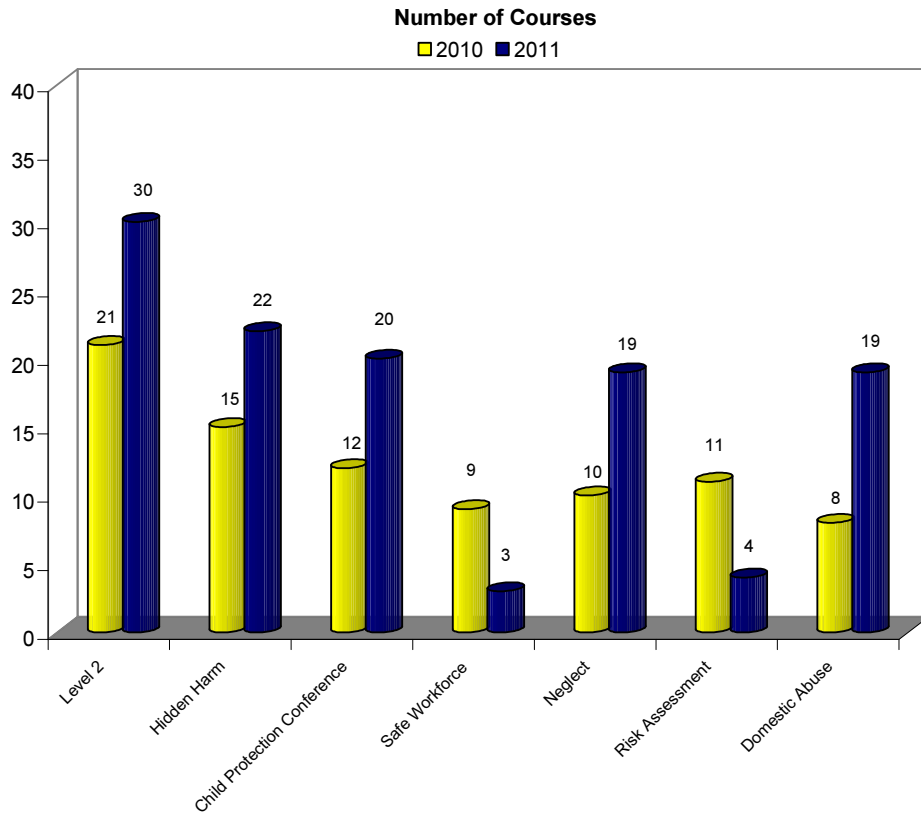
The following new areas of work will be included in the 2013/14 work plan:

- Consider the impact of the new Working Together to Safeguard Children as to whether the LSCB procedures will require amendments.
- Implement changes to the LSCB procedures in the light of amendments to the regional cross boundary procedure which are designed to strengthen consistency in practice when children who are subject to a section 47 investigation or a Child Protection Plan transfer from one Local Authority to another.
- In view of the amendment to the definition of domestic abuse to include 16 and 17 year olds which is to be implemented in March 2013, the LSCB procedures will be reviewed and updated. The new definition includes those who use coercive and controlling behaviours and there is a need to consider the links between domestic abuse and child sexual exploitation.
- The legislation around registered sex offenders has been amended to include the need to notify the police when they access a house either temporarily or permanently more than 12 hours. The LSCB procedures will be reviewed and amended to include this new requirement.

LSCB Training

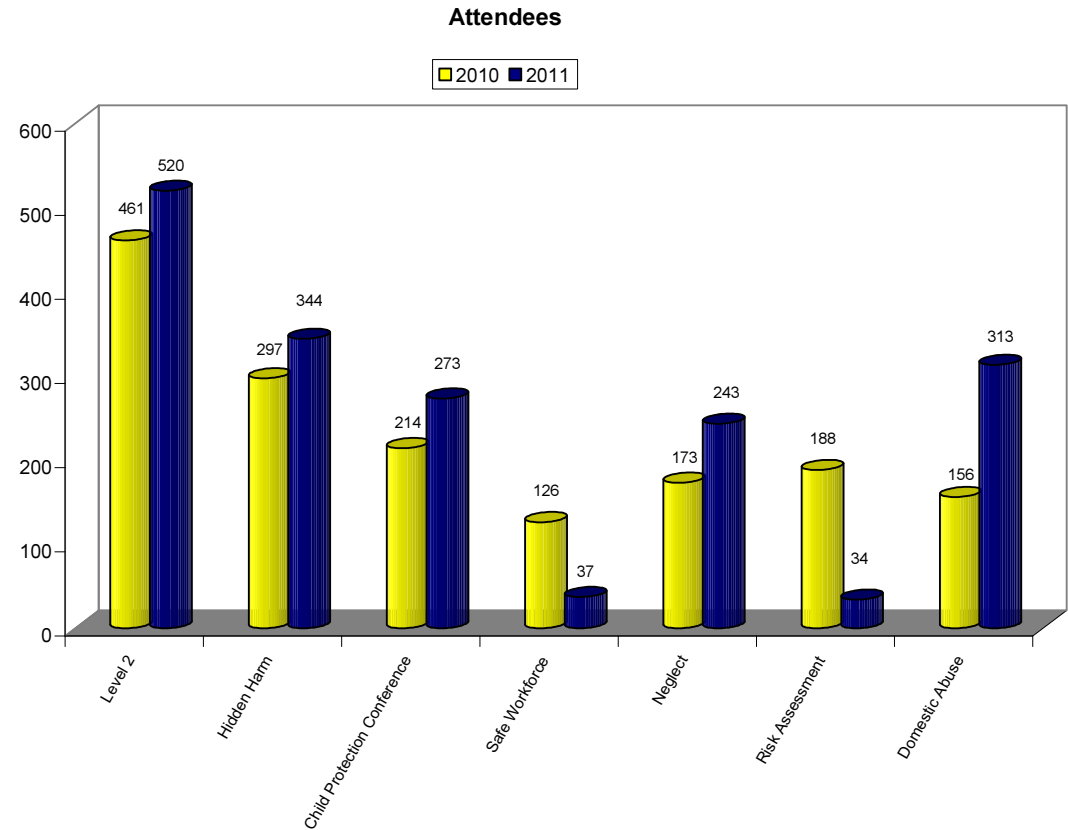
January to December 2011 was a very busy training year with the number of courses at a new high with 117 courses completed; this showed an increase for the third year in succession. The chart below outlines the increase compared to 2010/11.

Number of Courses



Attendance on courses

There were 1,781 people attended LSCB training in the 12 month period also an increase on last years figures as illustrated in the next table.



E-learning continues to be a significant part of the training with Level 1 Sexual Exploitation and Hidden Harm LSCB courses. There continues to be an issue with licences being opened and not completed and the Training Co-ordinator continues to monitor this so that partners are aware and can take action to ensure licenses are well used.

Over the course of the year nine courses were unfortunately cancelled due to poor attendance; it was felt not appropriate to run courses for under eight participants as the training experience for participants is significantly compromised. It was noteworthy that six of the cancelled course were in the Dales locality. This is an area that often complains that training is not provided in their area but 2011-12 showed training when provided was not taken up.

Summary of courses delivered

Neglect – 95% said that the objectives of the course were met and 99% indicated they had gained additional knowledge.

Safe Workforce – 100% said course objectives were met and they had gained additional knowledge.

Child Protection Conference – 98% said objectives of the course were met and 99% indicated they had gained additional knowledge.

Domestic abuse – 96% said objectives of the course were met and 96% indicated they had gained additional knowledge.

Hidden Harm –98% said objectives of the course were met and 98% indicated they had gained additional knowledge.

Level 2 –95% said objectives of the course were met and 95% indicated they had gained additional knowledge.

Risk Assessment - 98% said objectives of the course were met and 100% indicated they had gained additional knowledge.

Additional Training Provision

It was agreed in 2011 that temporary additional training capacity would be added to the LSCB team as a result of being asked to deliver a series of courses for the Early Years sector. This post income generates so that this post is at no cost to the Board. The current position is that the necessary level of income has been achieved and agencies in County Durham are benefiting from the additional resource.

Income Opportunities Achieved

The Durham Early Years Sector (EYS) in May 2011 had discussions with the LSCB about the possibility of the LSCB providing training for EYS; this training to be a mixture of established LSCB courses and newly developed courses.

Income generated £45,000

This programme started in January 2012 and is being very well received with 100 private nurseries having access as well as over 400 childminders. The early evaluation is very positive EYS has already identified an increase in the number of enquiries regarding safeguarding from private nurseries. A detailed evaluation will be available autumn 2012.

Following the success of these arrangements EYS has agreed to the LSCB continuing this programme and developing new courses into 2013:

96% said course objectives were met and 98% said the course was very good/good

Further income has been generated from the purchase of additional training by single agencies and elements of the independent sector. This is ploughed into LSCB developments

Total Income generated - £48,600.

Training Strategy

The training strategy for 2013/2014 takes into account recent key developments and messages from national guidance and local policy and service provision.

These include:

- The move to integrated service provision (One Point) that reinforces that safeguarding children is everyone's responsibility.
- The Munro review of child protection which identifies early help to families as being crucial in improving outcomes for children and for preventing child protection concerns at later stages "A major challenge in building a more responsive child protection system is helping a wide range of professions to work together well in order to build an accurate understanding of what is happening in the child or young person's life, so the right help can be provided" (Munro Review May 11)
- Working Together 2012 along with a host of other guidance and research promotes that "effective measures to safeguard children are those that also promote their welfare. They should not be seen in isolation from the wider range of support and services already provided and available to meet the needs of children and families."
- Think Family Practice – "making sure that the support provided by children's, adults' and family services is co-ordinated and focused on problems affecting the whole family is the **only** effective way of working with families experiencing the most significant problems." (Think Family – Improving Support for Families at Risk; DFE 2009)

The 2013/2014 programme will aim to reflect these principles by

1. Promoting effective collaboration from adult and children's services in the design and delivery and in the attendance of multi agency training. The training will seek to involve specialists in various areas of practice to ensure that it promotes current knowledge and expertise. The training will seek to 'mirror' effective collaboration in the field.

2. Promote the importance of early help by focusing on intervention throughout the continuum of needs and services (the Single CAF/ CIN procedures as well as the child protection procedures).
3. Focusing on intervention (the doing) as well as raising awareness of potential child welfare concerns.

Durham LSCB places high value on people working collaboratively, bringing people together in ways that mirror the diversity of practice networks engaged with children and their families. Multi-agency collaboration in the design and delivery of training is believed to be essential to ensure that course content is up to date and benefits from the knowledge and expertise of specialists in a given field.

The Training Strategy has adopted Chapter 4 of Working Together to Safeguard Children 2010 guidance regarding the different target groups for safeguarding children.

The outline training programme for 2013/2014:

A. E Learning

Basic Awareness in Safeguarding	e-learning	An online introduction to safeguarding
Hidden Harm	e-learning	An online introduction to Parental Drug and Alcohol misuse
Sexual Exploitation	e-learning	An online introduction to Sexual Exploitation

NB – e-learning licenses will issued for a 4 month period

B. Process and procedures

Safeguarding Processes	1 day course	Safeguarding Course. The course covers safeguarding processes	10 per year
The Initial Child Protection Conference	1 day course	Current course	10 per year
Safe Workforce	1 day course	Course designed for those involved in the recruitment and selection process	4 per year

Courses A and B or the equivalent is required before attending the following courses:

Specialist courses

Safeguarding Deaf and Disabled Children	1 day course	Current course
Domestic Abuse and the Impact on Children	1 day course	Current course
Parental Substance Misuse and the Impact on Children	1 day course	This replaces the current 1 day course on Hidden Harm
Parental Mental Illness and the Impact on Children	1 day course	Current course

Neglect	1 day course	This replaces the current 2 day course on neglect
Parental Learning Disability and the Impact on Children	1 day course	New course
Assessment and Intervention – Families with Multiple and Complex Needs.	1 day course	New course. This will replace and extend the current course on Risk Assessment
Effective Engagement with Families	1 day course	New course
Child Sexual Exploitation	1 day course	New course

Conferences / Seminars

Working Together / Think Family	1 day learning seminar	This seminar will take place 3 or 4 times a year and will focus on the range of services that can be involved with families who are at risk.	Up to 4 per year
---------------------------------	------------------------	--	------------------

If demand for particular courses is high then the LSCB will consider increasing the number of courses available.

Child Death Reviews

There are two interrelated processes for reviewing child deaths:

1. **Rapid Response** by a group of key professionals who come together for the purpose of enquiring into and evaluating each **unexpected death; and**
2. An overview of **all deaths** up to the age of 18 years (excluding both those babies that are stillborn and planned terminations of pregnancy carried out within the law) in Durham and Darlington areas, undertaken by a panel.

A Child Death Overview Panel (CDOP) was established by County Durham Local Safeguarding Children Board and Darlington Safeguarding Children Board to ensure that each child death had an appropriate review.

30 children resident in Durham and 5 children in Darlington died between 1 April 2011 and 31 March 2012. Of the 35 child deaths:

- There were 15 Rapid Responses.
- 15 deaths have been or will be considered at a Local Case Discussion meeting.
- 13 deaths were reviewed at Panels during 2011/12
- 26 child deaths remain outstanding (4 cases from deaths prior to April 2011) and will be brought forward to 2012/13.

From the local case discussions held in 2011-12, including some regarding children who died in the previous year, no strong themes have emerged. However, some of the learning points included:

- Better liaison required between armed forces and civilian medical services. This arose from the death of a young person discharged from the armed forces with no medical follow up. A list of contacts for CAMHS departments throughout the North East has been provided to Army medical services.
- A reminder to GPs that if a teenager with a health problem fails to engage with medical services, that parents have responsibility until the child's 18th birthday and parents should be approached to bring the child for medical treatment.

- GPs should always be invited to attend discharge planning meetings for a child with complex medical or social needs.
- A child with overwhelming sepsis died. There were delays in carrying out the actions recommended by tertiary paediatric intensive care specialists, mainly due to lack of familiarity of some personnel with paediatric equipment and practice. It was recommended that:
 - Joint educational and clinical governance meetings take place involving the departments of Paediatrics, Emergency Medicine and Anaesthetics.
 - Resuscitation scenario training be re-established on a regular basis.
- Following the death of a child with diabetes, the diabetes team were asked to be more proactive in discussing with patients and families how to manage the child when they were unwell, and to record this in notes.
- Tissue biopsies may only be taken from a child after death with the Coroner's permission.
- To avoid delays for bereaved families the letter to the coroner should be written as soon as possible after the child's death, ideally by the doctor who certified the death.
- Community nurses not to use e-mail to notify medical staff of changes in a child's condition, but to speak to a doctor on the telephone.

Progress against actions 2011/12

With regard to the main actions listed in last year's report, we are very pleased and grateful that NHS County Durham & Darlington has agreed to continue funding the sessions for the Designated Paediatrician and the Rapid Response Nursing Team. This has provided security for the Rapid Response service, and allows us to continue to offer a much appreciated service for bereaved families.

The Rapid Response Teams involvement following the sudden and unexpected death of a child has proven to be extremely helpful to the families and professionals involved.

Work Plan 2012/13

1. To identify and train a successor to Dr Smith as Designated Paediatrician.
2. To review and update the local multi-agency SUDIC Procedures in conjunction with partner agencies and HM Coroner.
3. To ensure that the LSCB Child Death Review Procedures take into account any relevant changes identified in the Sudden Unexpected Death in Children procedures

A copy of the Child Death Review Annual report can be found at www.durham-lscb.gov.uk

Serious Case Reviews

When a child dies and abuse or neglect is known or suspected to be a factor in the death, the LSCB should always conduct a Serious Case Review. The LSCB should consider undertaking a review whenever a child has been seriously harmed and the case gives rise to concerns about the way in which local professionals and services worked together to safeguard the welfare of the child.

Two deaths of children in County Durham have resulted in Serious Case Reviews in 2011/12 and both of these have been evaluated by Ofsted, receiving a 'good' judgement

The findings of these reviews will be published at the conclusion of criminal and coronial investigations. These reviews will be published in full although redacted where appropriate to remove personal family information not relevant to the review findings.

Much work has been undertaken to further raise the standards of Individual Management Reviews completed by agencies (IMRs), and Overview Reports which form the basis of robust Serious Case Reviews. IMR training and practice guidance is available to ensure we offer the best advice possible to authors.

Monitoring and Evaluation of Serious Case Reviews

Lessons learned from serious case reviews are robustly monitored by the LSCB Serious Case Review Monitoring Group using a specially developed Thematic Monitoring Tool which has been recognised national as being an example of good practice.

This process not only ensures that actions resulting from Serious Case Reviews are completed but also provides an opportunity to analyse key themes that have arisen over time enabling the LSCB to understand how well lessons are being embedded into practice.

This process also provides evidence necessary to drive forward and challenge agencies that are not robustly bringing about change and has resulted in a much improved focus on completing actions.

Raising Awareness of Lessons from Serious Case Reviews

It is the responsibility of each partner agency to ensure that lessons from Serious Case Reviews are disseminated to both managers and frontline staff. To augment this process, the LSCB hold annual multi-agency conferences to report on the findings of Serious Case Reviews and involve staff and managers in the learning process.

As a result of their success, the LSCB has established a programme of multi-agency half day conferences to raise awareness about key messages and lessons from Serious Case Reviews and other reviews undertaken by Durham LSCB and to share elements of good multi-agency practice. In 2012 these conferences focussed on the outcome of five cases that had been reviewed, two as Serious Case Reviews and three local Learning Lessons reviews.

Key Areas of Learning from Reviews

- Bruising to immobile babies – the need to ask questions and follow procedures.
- Mental health awareness – professionals need to develop a greater understanding of how mental illness may present itself and options available to seek urgent assessment.
- General public need to understand how to seek assistance when someone is suffering mental ill health.
- Importance of challenge and professional curiosity.
- Importance of management oversight.
- Need to improve information sharing and communication between midwives, health visitors and GPs; and also between the hospital and the police.
- Invisibility of father in agency records.
- Need to ensure that key information is shared particularly at hand over points so that concerns are not lost.
- Assessment of sex offenders in contact with children must be more robust and assessments should only be undertaken by staff with sufficient knowledge of sex offender's behaviour.
- Use of chronologies to pull information together.

Changing Philosophy about Learning Lessons

Professor Munro⁴ recommends that LSCBs adopt 'system' methodology in conducting Serious Case Reviews in order to move beyond identifying what happened to explain why it happened.

In their response the Government has clearly agreed that such approaches should inform further consideration.

Durham has recognised for some years that there is a need to transfer valuable energy and limited resources from lengthy investigation processes to understanding and developing systems and practice that will help keep children safe.

Durham LSCB has taken the opportunity to pilot a more facilitative and reflective process to review cases which do not meet the criteria for a mandatory Serious Case Review, but where it is considered lessons could be learned. An independent person led the first review, but in 2012 the role was shared between the Business Manager and the Performance Manager in reviewing two subsequent cases. The process has continued to engage both frontline practitioners and managers in a reflective process of learning and action planning. The response from those directly involved in the process has continued to be very positive. In addition, using the LSCB staff has reduced considerably the costs of an independent consultant.

Although Durham LSCB will continue to undertake Serious Case Reviews in accordance with Government guidance⁵, where opportunities exist to trial other processes to learn lessons effectively, we will do so.

The results clearly indicate that agencies need to reinforce the lessons learned to ensure that lessons are not forgotten over time.

Processes and actions taken to improve practice should be subject to compliance, monitoring and audit by all partner agencies.

⁴ Professor Eileen Munro-Review of Child Protection A child-centred system May 2011

⁵ Working Together to Safeguard Children DFE 2010

Section 6: Priorities 2012/13

'Working Together to Safeguard Children 2010', states that the LSCB should have a clear work programme of work including measurable objectives. The activities of the Board should fit clearly within the framework of the Children and Young People's Plan and the voice and experiences of young people should strongly inform the LSCB's work programme.

The following information has been used to identify the work programme and priorities for Durham LSCB for 2012/13:

- Progress made in the LSCB work programme 2011/12.
- Matters emerging from the new LSCB dataset.
- Knowledge of Government drivers and developments.
- Local knowledge including, self-assessment, analysis of performance data from child protection activity including multi-agency child protection conferences.
- Feedback from young people.
- The Children and Young People's Plan.
- Lessons from Serious Case Reviews both local and national.

Durham LSCB agreed the following priorities for 2012/13 at the Board held in August 2012:

Sexual Exploitation

Sharing Information

Think Family

Mental Health – impact on parenting

Hidden Harm

The Child Centred System – Munro recommendations

Section 7: The Challenge for the Children & Families Trust in County Durham

Positive Results of Inspections

The announced inspection of safeguarding and services for Looked After Children (LAC) was undertaken in December 2011. It assessed how well the partnership is keeping children safe from harm and delivering better outcomes for looked after children. Overall Ofsted rated County Durham's Children's Services as 'outstanding'. They judged the overall effectiveness of safeguarding in County Durham as outstanding; capacity to improve was also judged to be 'Outstanding', as was the quality of partnership working.

The challenge of the Children & Families Trust is to maintain these very high standards and to continuously improve services for children and young people and the most vulnerable in County Durham at a time when there are significant cuts in public sector funding and particularly the proposed cuts in the Early Intervention grant to Councils.

Prevention and Early Intervention - Development of the One Point Service

At a strategic level the Children & Families Trust is mobilising its resources to intervene early. Partners recognise that early intervention is critical to reducing the demand for more specialist services. In September 2011, the One Point Service was launched bringing together over 750 multi-agency members of staff across 10 teams under the single line management of the Local Authority. The Service is designed to ensure that all community based universal and targeted services are focused upon delivery of prevention and early intervention service from birth to 19 years.

The Children & Families Trust regularly updates the LSCB on progress made in delivering services through One Point and the impact the new arrangements are having on the lives of children and families.

Common Assessment Framework - CAF

In 2011 a key challenge for the Trust has been ensuring that all partner agencies have a working knowledge and good understanding of the Common Assessment Framework/Children in Need interface. The LSCB has incorporated elements of the single CAF/CIN procedure into all its multi-agency training sessions so as to reach a wide audience of practitioners working with children and families.

Creation and implementation of the Think Family Strategy

In 2011 The Children & Families Trust developed the 'Think Family' approach strategy and action plan involving a range of partner agencies across County Durham. It recognises where families have multiple and complex needs and is delivering against those needs.

The County Durham Think Family Strategy has been revised to reflect the Government's Troubled Families Programme. Analysis of the current collated database reveals approximately 1,415 families who meet core criteria for inclusion in the Think Family Programme. The programme will provide integrated whole family support to help families break the cycle in similar ways that the County's Family Pathfinder and Family Intervention Programme (FIP) have been doing in recent years. The focus will be to enable all services to work together differently to avoid duplication, maximise impact and deliver services that are genuinely designed around the needs of families. All agencies will be expected to adopt new ways of working with identified families using:

- a single assessment;
- a multi agency 'team around the family';
- an identified lead professional;
- solution focussed support plans; *and*
- common progress reporting processes.

Information Sharing

The key to effective safeguarding is timely sharing of relevant information. Failure to do so can have very serious consequences. Serious Case Reviews in County Durham continue to highlight this issue. This suggests that sufficient progress is not being made or sustained.

Although information sharing was a priority in 2010/11 and some partner agencies have done significant work to progress this issue, further work will be necessary to maintain momentum and ensure that the strategies make a difference.

Improvements in information sharing will only happen if blockages to good practice and poor practice are known and addressed. Experience has shown that this process is not automatic; it needs to be led and managed from the top of each organisation to ensure that systems and processes exist to promote information sharing and deal with issues which prevent this.

A key challenge is in building the confidence of staff to both seek and share information to safeguard children when faced with data protection processes and regulations that may be perceived as preventing this.

A further challenge is to ensure staff know who to contact when sharing or seeking information.

Information sharing is fully incorporated into all LSCB training. The Children & Families Trust needs to recognise the importance of this issue and prioritise actions to make progress given this will be the third year that the LSCB has highlighted this as a key priority.

Child Protection Training

Levels of multi-agency training have significantly increased to meet demand. To augment the training courses e-learning training has been developed and commissioned with the result that greater numbers can access training. E-learning is an expensive resource but is cost effective in that it delivers training to large numbers of staff from a wide range of services.

LSCB data monitoring shows that there are a significant number of e-learning licences that are applied for, opened but not completed. This was identified as a challenge previously but continues to be an issue.

The challenges for the Trust is to ensure that agencies value this resource as a method of providing large numbers of staff with safeguarding training and ensure they use and benefit from it.

Section 8: Agency Contributions

	2011/12 contributions
DURHAM COUNTY COUNCIL	£180,636
CAFCASS	£550
HASSOCKFIELD SECURE TRAINING CENTRE	£2,680
DURHAM TEESSIDE PROBATION TRUST	£2,680
COUNTY DURHAM PRIMARY CARE TRUST	£100,110
DURHAM POLICE AUTHORITY	£33,085
FURTHER EDUCATION COLLEGES	£2800
NORTH TEES & HARTLEPOOL FT	£2,680
COUNTY DURHAM AND DARLINGTON FT	£2,680
TOTAL INCOME	£327,891

Section 9: Current Membership

Independent Chair

Fran Gosling-Thomas

Lay Member

Bill Worth

Durham Children & Adults Services

Rachael Shimmin

Director of Children & Adults Services

Gail Hopper

Head of Children's Care
(Vice-Chair of Durham LSCB)

Lesley Jeavons

Head of Adult Care

Caroline O'Neill

Head of Education

Gill Eshelby

Head of County Durham Youth Offending Service

Carole Payne

Head of Early Intervention & Prevention Services

Lead Member for Children's Services

Claire Vasey

Lead Member for Children's Services



Durham Constabulary

Detective Superintendent Paul Goundry

Force Lead for Safeguarding
Durham Constabulary

National Probation Service

Carina Carey

Director of Probation Services
Durham Tees Valley Probation Trust

Durham County Council Leisure Services

Julie Russell

Area Leisure Manager
Durham County Council

Prison Service

Trevor Wilson-Smith

Director
Hassockfield Secure Training Centre

Health Services

Anna Lynch

Director of Public Health
NHS County Durham

Kath Vasey

Head of Children & Families
County Durham & Darlington NHS Foundation Trust

Lesley Mawson

Associate Director of Nursing and Governance
Tees, Esk & Wear Valleys NHS Foundation Trust

Maureen Grieveson

Associate Director of Patient Experience & Safeguarding
County Durham & Darlington NHS Foundation Trust

Dr Mike Lavender

Chair of County Durham and Darlington Child Death
Overview Panel

Cath Siddle

Deputy Director of Nursing North Tees and Hartlepool NHS
Foundation Trust

Dr Liz Herring

Interim Director of Nursing, Quality & Development
NHS County Durham & Darlington

Debra Bunford

North Durham Clinical Commissioning Group
Interim Board Nurse
NHS County Durham & Darlington
Durham Dales, Easington & Sedgefield Clinical Commissioning Group

Cafcass

Sue Simpson

Service Manager
Cafcass



Durham Diocese

Elsi Hampton

Child Protection Advisor
Diocese of Durham

Voluntary Sector

Gary Stokoe

Housing

Lynn Hall

Housing Solutions Manager
Durham County Council

Further Education

John Widdowson

Representative of Durham Colleges
Principal & Chief Executive of New College Durham

LSCB Officers

Pixley Clarke

Acting Business Manager / Child Death Designated Officer
Durham LSCB
Quality & Performance Manager
Durham LSCB

Steve Ford

Training Co-ordinator
Durham LSCB

Ian Scott

Development Officer
Durham LSCB

Emma Maynard

Admin Co-ordinator / Child Death Business Co-ordinator
Durham LSCB

Sharon Sanham

Administrator
Durham LSCB

Julie Hogg

Trainer
Durham LSCB

LSCB Advisers

Kelsey Clayton

Principal Solicitor
Durham County Council

Marilyn Brown

Safeguarding Manager /Local Authority Designated Officer
Durham Children & Adults Services

Dr Stephen Cronin

Designated Paediatrician
County Durham & Darlington NHS Foundation Trust

Diane Richardson

Designated Nurse Safeguarding Children
NHS County Durham & Darlington

Section 10: Core Business 2012/13

Core business planning is detailed in individual strategies and monitored through LSCB sub-groups and General Board

Key Responsibilities for LSCB

Standard 1

Children are safeguarded and protected

All agencies have clear strategic plans and policies that prioritise the safeguarding of children and promote their welfare, and involve users and their representatives in the development of these plans.

- LSCB partnership/ownership
- Involvement/participation of service users
- Child centred perspective
- Equal access to quality services
- Recruitment and supervision and workforce management of people who work with children

Outcome

- All agencies demonstrate compliance with Section 11 of the Children Act
- All partnership agencies demonstrate ownership of LSCB policies and procedures.
- The work of the LSCB fully incorporates a child centred perspective.
- All professionals are aware of the functions of the LSCB and have an opportunity to inform and contribute the work of the LSCB.
- All agencies provide demonstrable evidence that they actively involve children, parents and their carers in the development of strategic plans.
- All agencies have explicit written policies to promote equalities issues.
- All training opportunities incorporate equality issues as described within agency's policies.
- All training provided by the LSCB incorporates equality issues.
- Staff and volunteers from all agencies are aware of their responsibilities to ensure the safeguarding of children and have received training to enable them to fulfil this responsibility.
- Staff (including volunteers) have their safeguarding checks updated as required by legislation and guidance and these are properly recorded.
- Record keeping records confirm that checks are current on all existing and newly appointed staff and volunteers.
- The workforce is properly supervised and concerns are acted upon appropriately.
- All agencies have safe recruitment practices
- Staff are effectively supported and protected from danger and/or the risk of violence.
- Staff safety issues are reflected in training.
- Managers understand the importance of enabling staff to carry out their duties in the safest way possible.
- Agencies have effective and efficient processes to deal with allegations against staff, volunteers and others with the care of children.

Standard 2

The safeguarding of children in all settings and circumstances

Agencies have local policies and procedures that address the safeguarding of children living away from home and in other circumstances where they are known to be particularly vulnerable

- Young people in secure environments
- Children and young people exposed to domestic abuse
- Disabled children and young people
- Children and young people with substance abusing parents
- Children and young people in private fostering
- Children and young people who self-harm/misuse substances
- Children and young people at risk of sexual exploitation
- Unaccompanied children and young people
- Children and young people missing from education
- Children and young people in residential special schools
- Children and young people in long term special schools
- Children and young people in temporary accommodation
- Children and young people at risk of forced marriage
- Children and young people who are missing
- Children and young people who are unaccompanied

Outcome

- The LSCB has protocols in place to safeguard young people within secure environments in Durham and for young people normally resident in Durham who are placed in secure settings outside of the County.
The LSCB ensures that all agencies have effective and appropriate process to identify and refer to appropriate services concerns of Sexual Exploitation
- e-Safety Young people will have the knowledge, awareness and support to keep themselves safe in a digital world
- The LSCB works with other agencies to ensure that responses to issues of domestic abuse address child safeguarding issues.
- The LSCB, working with others, has proactively addressed and put in place strategies to address the needs of vulnerable children as identified :

Standard 3

The co-ordination and monitoring of the child protection system

The LSCB ensures agencies work collaboratively to develop and implement joint systems for ensuring the safeguarding of children, and monitors and evaluates the effectiveness of the child protection services

- LSCB ensures agencies work collaboratively
- LSCB monitors and evaluates the effectiveness and efficiency of the LSCB working arrangements
- LSCB monitors and evaluates single and inter-agency safeguarding practice

Outcome

- The LSCB is constituted by *Working Together to Safeguard Children* and has appropriate representation from all relevant agencies including those from the voluntary sector at an appropriate level of seniority.
- LSCB is adequately funded to fulfil its responsibilities
- The LSCB has put in place a Performance Management Framework based on clear standards and performance indicators for child protection, and uses management information in respect of child protection and safeguarding of children to improve services.

Standard 4 Effectiveness of Local Arrangements to Safeguard Children

Safeguarding concerns are identified and responded to appropriately and sensitively with agencies working in partnership to ensure children are effectively safeguarded

- Consistent understanding of thresholds
- Procedures are accessible and quality of practice known and managed
- Activities focus on child
- Performance management at point of service delivery

Outcome

- Staff undertake a Common Assessment (CAF) to address the needs of children
- Staff of all services have a consistent understanding of the thresholds for sharing information with and referral to Safeguarding & Specialist Services/Police, and the undertaking of an Initial Assessment to identify if the child is in need and, if so, if the child's welfare is being safeguarded.
- Responses to safeguarding concerns are conducted in accordance with the LSCB Child Protection Procedures
- All safeguarding activities focus on the child (What must life be like for a child living in this household)

Standard 5 Recording and information sharing

Record keeping and information sharing for the purposes of safeguarding children

- Protocols for sharing information
- Baseline recording standards

Outcome

- There are clear protocols between the LSCB partner agencies for the sharing of information.
- Staff are aware of data protection and information sharing issues

Standard 6 Knowledge and skills

The LSCB ensures that staff (of the constituent bodies of the LSCB) who undertake work to safeguard children are well informed in respect of good practice and are appropriately skilled for the tasks

- Strategic plan – inter-agency training
- Delivery of inter-agency training

Outcome

- The LSCB has a strategic plan for inter-agency training of staff
- Partner agencies have the opportunity to attend a series of workshops to promote the work of the LSCB, share good practice and learn lessons. Staff of all LSCB constituent agencies are trained and supported in their work to protect children, and that this training is based upon up to date knowledge and skills
- Staff of all LSCB constituent agencies are trained and supported in their work to protect children, and that this training is based upon up to date knowledge and skills

Standard 7

Serious Case Reviews and Child Death Review processes

The LSCB conducts case reviews under the guidance of Working Together to Safeguard Children effectively and ensures that appropriate lessons are learnt and changes to practice implemented to maximise safeguarding for children

- Learning lessons
- Focus on actions and embedding change
- Monitoring processes
- Child Death Reviews

Outcome

- A Serious Case Review is undertaken in accordance with regulation 5 and Working Together 2010
- Parents are given every opportunity to contribute to Serious Case Reviews
- Agencies use the lessons learned from Serious Case Reviews to improve inter-agency working and improve practice to better safeguard and promote the welfare of children.
- Where the criteria for holding a Serious Case Review is not met, but it is considered by the Serious Case Review Panel that there are lessons to be learned, the Serious Case Review Panel will agree the appropriate action.
- Partner agencies have the opportunity to attend a series of workshops to share good practice and learn lessons.
- Action plans are implemented and their effectiveness monitored.
- All deaths of children and young people are reviewed by the Child death Overview Panel. Unexpected deaths are subject to local review

Standard 8

Reduce risk from potentially dangerous people

The police and probation service in collaboration with other relevant agencies ensure that effective arrangements to assess and manage the risks posed to children by potentially dangerous people are being established, monitored and reviewed

- Strategic and operational links
- Clear systems and processes

Outcomes

- Strategic and operational links exist between MAPPA and LSCB
- Clear systems are in place for the identification, tracking and management of people who are considered to present a risk to harm to children