

Annual Report

2017 / 2018

Safeguarding Children
in County Durham

www.durham-lscb.org.uk



Contents

1. Foreword by Independent Chair	3
2. Introduction	4
3. Local Data.....	5
4. Governance and Structure	7
5. Achievements against 2016/17 Priorities	10
6. Performance Monitoring and Quality Assurance	17
7. Training and Communication	23
8. Future Priorities.....	25
Appendix 1 – LSCB Membership	26
Appendix 2 – LSCB Staffing and Budget.....	28

1. Foreword by Independent Chair

Welcome to the Durham Local Safeguarding Children Board (LSCB) Annual Report for 2017/18. This is my last report as the LSCB Independent Chair and I would like to thank all those involved in the progress the LSCB has made over my three year tenure. I would also like to welcome Michael Banks the new Transitional Chair who will take the LSCB through the new Safeguarding Arrangements in the Children and Social Work Act 2017. You can read more about that on [Page 8](#).

This annual report provides local people with an account of the LSCB's work over the past year to improve the safeguarding and wellbeing of children and young people across County Durham.

The report reflects the activity of the LSCB and its sub groups against the agreed priorities for 2017/18. It also reports on the Serious Case Reviews undertaken and identifies the priorities and safeguarding work we will take forward into 2018/19.

As always, the children and young people of County Durham are at the very heart of all we do and our vision of **'Every child and young person in County Durham feels safe and grows up safe from harm'** continues to drive us forward.



We have continued to increase the visibility and the 'Voice of the Child' and over the course of the year our focus on 'Empowering Young People' has helped us to understand more fully the experience of the child or young person receiving help and support.

We continue to take part in the Children Commissioner's Takeover Challenge; working with young people to produce our interactive Annual Report for Young People. This kind of engagement and participation from young people has been recognised for the last three years by maintaining our Investing In Children status.

I would like to thank and recognise the contribution of our Lay Members and the Children and Young People Portfolio Holder who bring another layer of independent scrutiny to the work of the LSCB.

Lastly I would like to thank the many partner agencies for their hard work and dedication during a time of huge demand and whose commitment and motivation helps deliver our shared priorities.

I know Durham is well placed to introduce the new arrangements through Safeguarding Partners and continue to protect and safeguard our children and young people. I wish you all well.



*Jane Geraghty
Durham LSCB Independent Chair*

2. Introduction

Durham Local Safeguarding Children Board has a statutory duty to prepare and publish an Annual Report which describes how our partners safeguard vulnerable children and young people.

Our primary responsibility is to provide a way for the local agencies that have a responsibility in respect of child welfare, to agree how they will work together to safeguard and promote the welfare of children and to ensure that they do so effectively.

Section 3 of the report highlights some statistical information about County Durham and provides a local context for our work.

Section 4 describes the local governance arrangements and structure of Durham LSCB. It also provides information on the new Safeguarding Arrangements that will be introduced in 2018/19 through the Children and Social Work Act 2017.

Section 5 highlights some of the achievements and the progress that has been made in the last year as well as reporting on the work undertaken against the 2017/18 priorities.

Section 6 covers our Performance Management Framework and describes the multi-agency audits we have undertaken. It also provides an overview of Serious Case Reviews and the use of restraint in Aycliffe Secure Services Centre.


Section 7 outlines our multi-agency training provision and describes the marketing and communication activity undertaken by the LSCB.

Lastly, **Section 8** identifies the priorities Durham LSCB will take forward into 2018/19.

The Annual Report 2017/18 demonstrates the extent to which the functions of the Durham Local Safeguarding Children Board, as set out in the national statutory guidance 'Working Together to Safeguard Children' (March 2015) are being effectively fulfilled.



The information presented in this Annual Report is drawn from a wide range of sources from across the County Durham Partnership. These include the County Durham Integrated Needs Assessment; Lessons Learned from local Serious Case Reviews; the Child Death Review Annual Report; and a range of Durham LSCB strategy documents and action plans.

 **More Information:** Find out more information about the [Integrated Needs Assessment](#)

3. Local Data

County Durham stretches from the rural North Pennines Area of Outstanding Natural Beauty in the west to the Heritage Coastline in the east and is home to a range of national treasures including Durham Cathedral, a UNESCO World Heritage Site.

The county has a very diverse combination of communities ranging from some of the most sparsely populated rural areas in the country through to the larger towns and Durham City; each area with its own needs and aspirations.



In 2016, there were an estimated **522,143 people** living in County Durham



The County has seen a **decline in the 0-15 population since 2001**. However this decline has seen a slight reversal between 2011 and 2016



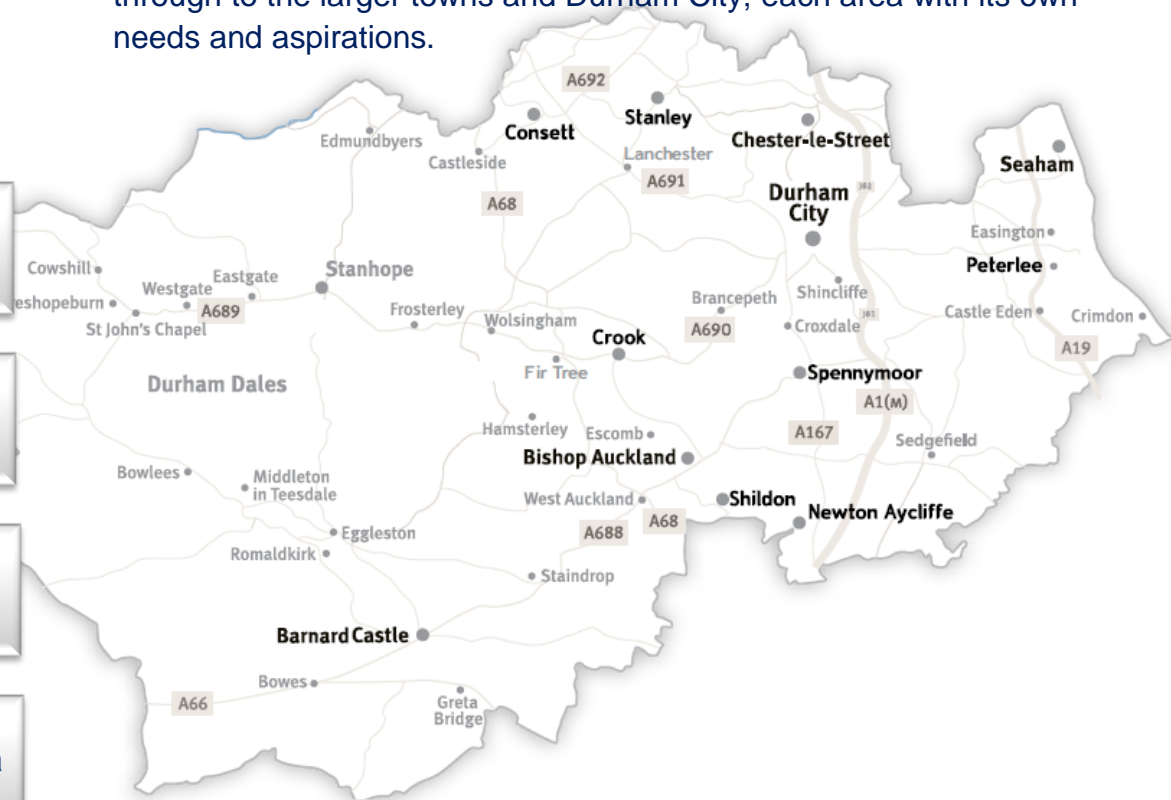
The County has **12 major centres of population** including Durham City, Chester-le-Street, Newton Aycliffe, Consett and Peterlee



Although levels of deprivation in County Durham have improved we are ranked the **75th most deprived area** out of 326 local authorities in England



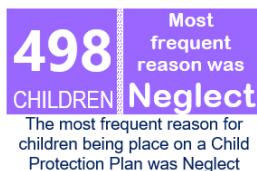
Child poverty in County Durham is higher than the England average, with **23.9% of children** under 16 years living in poverty



Data source: [Office for National Statistics](https://www.ons.gov.uk) (ONS)

Local Safeguarding Data 2017/18 (Provisional Data)

498 children were subject to a Child Protection Plan (50 per 10,000 population aged 0-18).



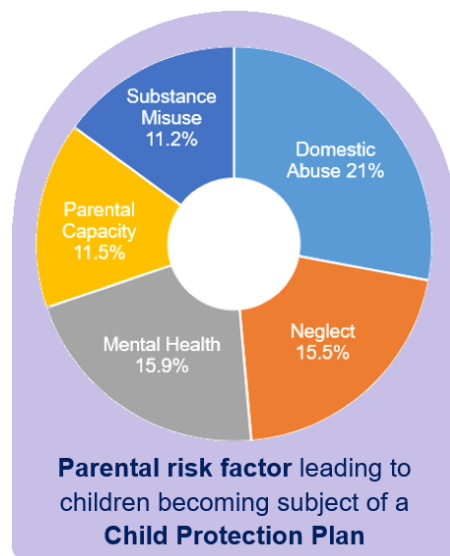
A continued reduction of the percentage of Child Protection Plans that lasted two years or more and has **fallen to 0.9%**.

Children on a Child Protection Plan for a second or subsequent time, within two years of the previous plan **is 6.2%**.

Neglect continues to be the **most frequent reason** for children being placed on a Child Protection Plan in 2017/18.

71.6% of children who were made subject of a Child Protection Plan under five years old were made so due to neglect. This is a **reduction of 7%** from the previous year.

Domestic abuse continues to be the main parental risk factor leading to children becoming subject of a Child Protection Plan. Mental Health (15.9%), Neglect (15.5%), Parental Capacity (11.5%) and Substance Misuse (11.2%) are also significant factors.



798 children are in the Looked After system.

19 children were in Private Fostering arrangements during this period.

49 children and young people were reported missing from home in County Durham more than once.



Number of Looked After Children

177 Child Sexual Exploitation (CSE) referrals. This is an increase on previous years and reflects a heightened awareness. Of those targeted **80% are girls.** Online Grooming is the most common model of CSE.



6 Serious Case Reviews commenced and 2 Serious Case Reviews published. **7 learning lessons events** for practitioners delivered throughout the year.

20,015 unique users visited the LSCB website in 2017/18 with over **115,000 page views.**




A total of **100 multi-agency training courses and events** were delivered and **attended by 4,113 staff.**



4. Governance and Structure

Local Safeguarding Children Board

Each local area is required by Law to have a Local Safeguarding Children Board. The LSCB is a statutory body established in legislation (Children Act 2004) and works according to national guidance 'Working Together to Safeguard Children 2015'.

		
What is safeguarding? Safeguarding is about keeping children and young people safe and protecting them from harm , while making sure they grow up in a safe environment.	What does the LSCB do? We promote the welfare of children and young people, safeguarding them from harm and protecting those children who are at significant risk of harm or neglect .	What does it mean for me? Agencies including the Councils' Children and Young People's Services, the Police, Schools and Colleges and Health Services such as GPs, Hospitals and Health Visitors are all here to help .

Our Vision: Every child and young person in County Durham feels safe and grows up safe from harm

The Durham Local Safeguarding Children Board is chaired by an independent person and meets quarterly. The Board held two development sessions in 2017/18 taking the total number of meeting to six a year. Durham LSCB is supported by the LSCB Business Unit which is hosted by Durham County Council.

The functions of the LSCB are:

- ***To develop policies and procedures for safeguarding and promoting the welfare of children in the local area***
- ***To communicate and raise awareness of the need to safeguard and promote the welfare of children***
- ***To monitor and evaluate the effectiveness of what is done by the local authority and their Board partners individually and collectively to safeguard and promote the welfare of children and advise them on ways to improve***
- ***To participate in the planning of services for children in the area of the authority***
- ***To undertake reviews of serious cases and advising the local authority and their Board partners on lessons to be learned***

The governance and effectiveness arrangements form the formal agreement between the LSCB Board and all partner agencies. It outlines accountability; key purposes; functions and tasks; membership; and agreed standards and expectations of LSCB members.

 **More Information:** Find out more information about [Durham Local Safeguarding Children Board](#)

The Children and Social Work Act 2017

Following the Wood Review and the Children and Social Work Bill in 2016, **new safeguarding arrangements** were passed into law through the Children and Social Work Act 2017.

Provisions within the Children and Social Work Act 2017 will replace Local Safeguarding Children Boards (LSCBs) with new local safeguarding arrangements, led by three **Safeguarding Partners** and supported by relevant agencies. It also places a duty on new Child Death Review partners to review the deaths of children normally resident in the local area.

In October 2017 the Department of Education (DfE) consulted on the draft 'Working Together to Safeguard Children 2018' guidance which lays down in much more detail the new safeguarding arrangements. Durham Local Safeguarding Children Board provided a full response to this consultation.

Alongside the 'Working Together' consultation documents, the DfE released [statutory guidance on transitional arrangements](#).

This document for Local Authorities, Police, Health and LSCBs provides guidance on the arrangements that should operate as part of the transition from LSCB's to Safeguarding Partners and Child Death Review Partners.



Safeguarding Partners are identified as:

- Local Authorities
- Chief Officers of Police
- Clinical Commissioning Groups

Child Death Review Partners are identified as:

- Local Authorities
- Clinical Commissions Groups

Safeguarding Partners will identify the **relevant agencies** required to support local safeguarding arrangements and will include agencies that are currently members of the LSCB.

The guidance also describes the **transitional arrangements** which should be followed during the transition from the system of Serious Case Reviews to the new national and local review arrangements.

A formal date when the relevant provisions of the Children and Social Work Act commence, has not been confirmed. However, it is expected to be in conjunction with the launch of 'Working Together to Safeguard Children 2018'.

Following this Safeguarding Partners will have up to twelve months to agree safeguarding arrangements. These arrangements must be subject to independent scrutiny. Development days are planned to begin June 2018 onwards to commence the process of change.

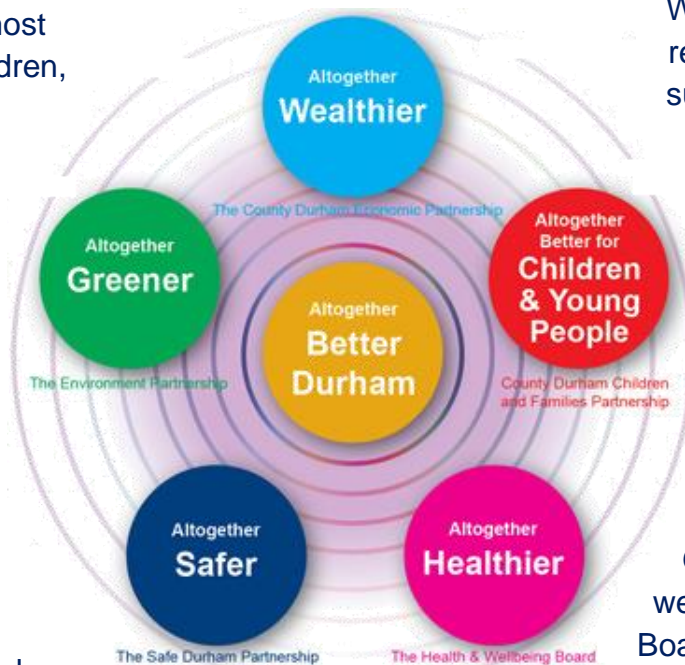
Durham Local Safeguarding Children Board will continue to carry out all of their statutory functions, until the point at which safeguarding partner arrangements begin to operate.

Working across Partnerships

Durham LSCB works with a wide range of themed partnerships. Together they form the overarching County Durham Partnership and work towards an 'Altogether Better Durham'.

Each of the five thematic partnerships has a specific focus:

- **The Children and Families Partnership** – Works to ensure effective services are delivered in the most efficient way to improve the lives of children, young people and families.
- **The Health and Wellbeing Board** – Promotes integrated working between commissioners of health services, public health and social care services, to improve health and wellbeing.
- **The Safe Durham Partnership** – Tackles crime, disorder, substance misuse, anti-social behaviour and to reduce re-offending.
- **The Environment Partnership** – Improves, transforms and sustains the environment to support the economy and the wellbeing of local communities.
- **The Economic Partnership** – Works to make County Durham an area where people want to live, work, invest and visit; whilst enabling residents and businesses to achieve their full economic potential.



Durham LSCB will continue to engage and challenge these partnerships where appropriate to safeguard and promote the welfare of children in County Durham.

We have strengthened our joint working with a range of partnerships on shared or similar priorities. Examples include:

Working with the Safe Durham Partnership in respect of domestic abuse, alcohol misuse, substance misuse and counter terrorism (PREVENT duty). Aligning and improving work within sexual violence, sexual exploitation and female genital mutilation.

Joint working with the Children and Families Partnership to increase the voice of the child through work that includes the student voice survey and the Children's Commissioner's Takeover Challenge.

Greater integration of the mental health and wellbeing agenda with the Health and Wellbeing Board and the development of a range of support aimed to reduce self-harm and suicide.

 **More Information:** Find out more information about [County Durham Partnership](#)

5. Achievements against 2017/18 Priorities

Empowering
Young
People

Published our **Annual Report for Young People**.

Impact: *This puts young people at the heart of the development and production of an annual report providing interactive safeguarding information from a young person's perspective.*

Tackling
Neglect

Revised **Children's Services Referral Form** re-aligning the order of information and reducing the amount of paperwork required. **Impact:** *The new referral form has improved the quality of information submitted to First Contact and our response to Neglect. Enabling families to get the right help at the right time and at the earliest opportunity.*

Working
Together

New **learning materials for Serious Case Reviews** to support managers with wider dissemination of learning.

Impact: *Materials contribute to improving supervision, training and team meetings. Giving staff more opportunities to reflect and improve their practice. This means children and young people will be better supported and safeguarded.*

Tackling
Neglect

Engaged with dental practices and Dental Network Group. **Impact:** *Improved multi-agency work to reduce the effect of dental Neglect. This means children and young people are better protected from hidden harms may be referred for support at an earlier stage.*



Online Child Protection Procedures

Impact: *Providing an up-to-date web based solution for practitioners that is fully searchable and accessible 24 hours a day from a wide range of devices.*

Reducing Child
Sexual
Exploitation

Launched a series of **Safeguarding Factsheets** covering subjects such as Child Sexual Exploitation, Alcohol Licensing, and Taxis Drivers. **Impact:** *Plain english factsheets, providing specific information. This improves protective factors (eyes and ears in the community), and means children and young people are protected in local areas.*

Working
Together

Introduced a **web-based multi-agency auditing** programme. **Impact:** *Providing inspection ready audits and processes whilst reducing demands on partner agencies administration during audit participation. This means families can be assured of the ongoing quality checks of the services they receive.*

Tackling
Neglect

Reviewed and introduced new **Neglect training**, Toxic Quad training and Neglect e-learning. **Impact:** *This new training supports practitioners, improving their learning, understanding and assessment skills. This means children and young people will be better supported and safeguarded against Neglect.*

Reducing Child
Sexual
Exploitation

Specialist Briefings – Exploitation and Radicalisation / Psychology and Behaviour of Sex Offenders / Working with Partners & Families / Risk, Harm and Decision Making
Impact: *These specialist briefing sessions have enabled staff to receive information and guidance that can be incorporated into their working practices and protect children.*



Safeguarding Week 2017 – **Impact:** *These events were attended by over 860 staff with a Facebook reach of over 30,000 views; raising the profile of safeguarding and promoting 'Safeguarding is Everyone Responsibility'.*

Professional Challenge

Professional challenge and critical reflection within safeguarding is a professional responsibility. It is a sign of **good professional practice**, a healthy organisation and effective multi-agency working.

Challenging decisions, practice or actions when concerns arise may alter the professional response when ensuring the safety or well-being of a child or young person or their family.



The LSCB **risk register and challenge log** is a well-established tool that is used to ensure partners provide mitigating actions to reduce identified risks and acts on challenges made to agencies. This is reviewed at each LSCB Board meeting.

Examples of Professional Challenge

The Child Death Overview Panel (CDOP) challenges agencies if agreed actions are not progressed within timescales and escalation processes are in place. For example, following a thematic review the CDOP have challenged Sustainability and Transformation Plans (STP) and Clinical Network in relation to the findings for maternity services.

Similarly, the Board monitors actions for learning following a Serious Case Review to ensure actions are progressed and implemented.

The LSCB have introduced **challenge clinics** to hold organisations to account following Section 11 audits and multi-agency audits. This has encouraged single agencies (such as GPs) to be more challenging of the evidence presented in audits, to dig deeper and in turn become more confident and robust in their audit compliance.

The LSCB challenge alcohol licence applications under the Licensing Act 2003 on their actions to protect children and young people and instigate a licensing review for failure to uphold licensing objectives.

A continued challenge from the Independent Chair is to improve the voice of the child. This has resulted in the Empowering Young People sub group and collaborative work with children's groups, schools, youth centres, the police youth cadets, Investors in Children and local Area Action Partnerships (AAP's).

Professional challenge also takes place at a **senior level through a Chief Officers Safeguarding Group** which includes the LSCB Independent Chair, Durham County Council, local Clinical Commissioning Groups, Probation organisations, local NHS Foundation Trusts and Durham Constabulary. This forum allows the opportunity to challenge and share information on safeguarding issues including:

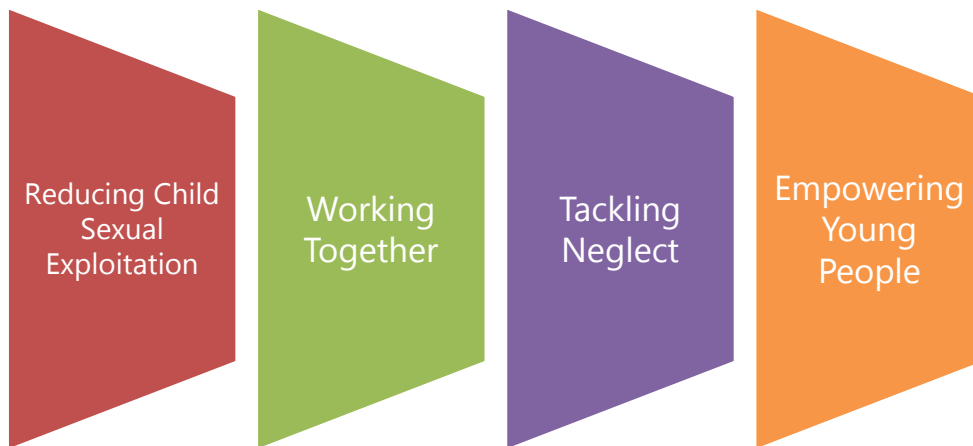
- Learning and recurring themes from Serious Case Reviews and Child Death Reviews
- Quality, impact and development of frontline practice
- Outcomes of multi-agency audits and action plans
- Emerging safeguarding concerns or trends
- Development of new Safeguarding Arrangements

Progress on LSCB priorities 2017/18

LSCB Priorities 2017/18

In setting the priorities for 2017/18 the LSCB Board reviewed the progress on previous priorities and **considered key themes and emerging challenges** from Serious Case Reviews. As a result Child Sexual Exploitation was retained; Early Help and Neglect was refocused to concentrate fully on tackling Neglect. Two new priorities were established; Empowering Young People and Working Together.

Click on the tabs below to take you to each priority section in the report.



- **Online Grooming** is the most common model
- Of those young people targeted **80% are girls**
- The **average age** of victims is **12 yrs old**

Priority 1 – Reducing Child Sexual Exploitation

What is Child Sexual Exploitation?

- Child Sexual Exploitation (CSE) is a form of **child abuse**
- It can happen to anyone who is **persuaded, bullied or forced** into having **sex or sexual activity** such as taking and sharing naked photos of themselves
- This can be in return for things like **alcohol, money, drugs** or other gifts
- It can happen **online and face to face**
- It **ruins lives** and has serious **long-term effects** on young people and their families

Multi-agency work is coordinated through the LSCB Missing and Exploited Group (MEG). Its remit is to monitor partner activity and improve the services and responses to reported missing and absent children and the multi-agency response to Child Sexual Exploitation.

Over the past year partner agencies have continued to prove their **multi-agency and single agency commitment to this work**. Mainstream funding for ERASE Support Workers and PCSOs have been secured. **All work is intelligence lead** and is coordinated through the Durham LSCB Child Sexual Exploitation Strategy across the following three strands:

- **Preventing** CSE from happening
- **Protecting** those who may be at risk
- **Pursing** those who may be offending against children

We have widened our **Exploitation and Grooming** training to agencies not traditionally associated with safeguarding but who come into regular contact with vulnerable children. This include some innovative work with Arriva Bus Services and Go North East. In addition we have also engaged with a number of regional sports academies such a Durham Football Association and Durham County Cricket Club.

We have seen the introduction of **Operation Artemis** which focuses on tackling and disrupting offenders and dangerous perpetrators. This complements the work of **Operation Makesafe** targeting hotspot locations and awareness raising work protecting young people.



Some of the work we are doing to tackle CSE

- Support the **ERASE brand** - website, media campaign Erase support workers, education materials
- Increased **intelligence around Missing From Education** / Permanent Exclusions / Home Educated
- Refreshed the **CSE risk assessment tool** and child protection procedures helping to protect and support victims while disrupting offenders
- Embedded CSE training in partner agencies for example - training now **mandatory for school nurses**
- Aligning CSE audits to the new **Joint Targeted Area Inspections** (JTAI)

*The LSCB has supported the police funded **Child Advocacy Centre** pilot aimed at children who are **victims of sexual abuse** and is intended to **improve the victim's journey** from report to court and beyond. In addition a new '**team around the child**' to provide a seamless therapeutic service.*



In 2018 we will **increase our focus on boys and young men at risk of CSE**. We also recognise that parents want more information to protect their children and we will develop actions to support this.

We will introduce **CSE champions in schools and further education settings** to enhance the safeguarding role already in place and we will continue to focus our work on missing from education; permanent exclusions; and home educated children.



Learning Point

Listen to our ERASE Support Workers talk about the risk factors of Child Sexual Exploitation.



More Information: Find out more information about [Missing and Exploited Children](#)

Priority 2 – Working Together

What is Working Together?

- The aim is to **achieve excellent partnership working** across all areas of LSCB business
- Drilling down into **problems** and **finding solutions** that work for every agency
- Changing agency culture to **improve multi-agency practice** following learning from Serious Case Reviews

To support the aims of Working Together, the group devised and delivered a **Practitioner Survey** within the LSCB annual programme of auditing for 2017/18.

This gathered the voice and experience of practitioners across a range of multi-agency work with **over 800 responses** received in a two month period. The responses identified a number of areas where actions was required.

Thresholds

It was identified that more training was required to **improve partner agencies understanding** of the Thresholds Document and to formalise the terminology.



The 0-19 Level of Need was renamed to the Threshold Document to take away any ambiguity while briefings sessions, newsletter items, and web updates covering the subject have also been delivered.

Safeguarding Referrals

It was highlighted that practitioners were unhappy with the format of the referral documentation. In response the Neglect Group has extensively **revised the Children's Services Referral Form** during 2017/18. (More information about this can be found on [Page 16](#)).

Some of the work to support Working Together

- **Thresholds:** Strengthen agreed shared thresholds across the partnership
- **Focused Intervention:** Assurance that children receiving support as a child in need, receive focused intervention in a time appropriate to the child
- **Removing Barriers:** Understanding the blockages, implementing lessons learnt and improving outcomes
- **Improve Information Sharing:** Understanding the barriers to local information sharing and mitigating issues



Learning Point

The Working Together group have also been working to implement learning from Serious Case Reviews. This two minute video asks you to re-think 'did not attend' notifications. (Shared with permissions of Nottinghamshire LSCB)

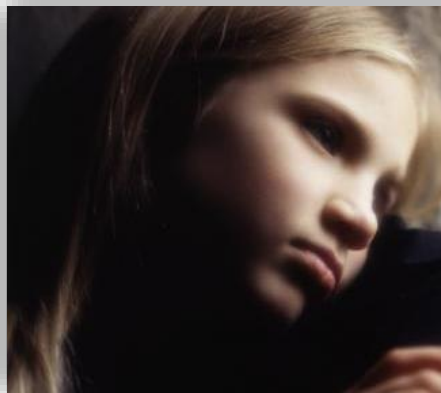


Priority 3 – Reducing Neglect

What is Neglect?

- Child neglect is a **failure** to look after a child and could result in **poor health** or development
- Children (including unborn babies), need food, water, shelter, warmth, protection and health care to **grow and develop**
- Children need their parents or carers to **love and care** for them
- Neglect can also include **physical abuse, emotional abuse and sexual abuse**

In 2017/18 the priority of Early Help and Neglect was refocused to concentrate fully on tackling Neglect. As a result the sub group launched the **Tackling Neglect Strategy** in April 2017. This was followed with a tackling neglect delivery plan with assigned lead officers identified for all priority actions.



Neglect is the
**greatest single cause of
children needing
protection and care
in County Durham**

The Tackling Neglect Strategy is aligned to four strategic objectives:

- **Understand Neglect** – To understand the local picture of neglect and the thresholds for intervention.
- **Early Identification** – To improve the recognition and assessment of neglect for children to ensure the most appropriate response is given.
- **Effective Provision** – To offer effective, evidence based interventions that reduce neglect before statutory intervention is required and to act decisively where these do not result in change for the child.
- **Family Focus** – To use the experience of our families and the voice of the child in the development and delivery of services.

Some of the work to tackle Neglect

- Considered new tools to support practitioners such as **Signs of Safety** which will be implemented in 2018
- Multi-agency working to tackle **dental decay** including new links to dental practices and the Dental Network
- Embedding **multi-agency audits** to monitor and review practice and also prepare staff to be inspection ready
- Delivered a **Tackling Neglect Conference** to over 160 practitioners
- Reviewed and **introduced** new multi-agency **neglect training, toxic quad training** and e-learning training

Children's Services Referral Form

The Neglect Group have overseen the introduction of a new referral form. Over time the old form had become part of a bigger single assessment and was unwieldy. The opportunity was taken to consult widely with a full range of partner agencies. As a result the new referral form has been re-aligned to follow the order of information needed and key documents such as the Threshold Document are now embedded into the referral form.

Children's Services Referral Form

Durham County Council

If a child is in immediate danger dial 999

If you are worried about a risk of significant harm to a child it is essential that you share your concerns by contacting First Contact on 03000 397379

This form should be used to refer a child and family for:

- ✓ Early help (level 2) – targeted provision for children with additional needs which can be met by a single practitioner/agency or where a coordinated multi-agency response is needed
- ✓ A request for targeted provision (level 3) – for children with multiple issues or complex needs where a coordinated multi-agency response is required
- ✓ A safeguarding child concern (level 4) – services to keep children safely at home, where a statutory response is required for statutory support

If an agency should advise or not to make a referral, or which service will best help the family and safeguard the child, please refer to the 0-18 Local Safeguarding Team. Other information can be found on the Durham LSCB website.

Email the completed form to: childrens.services@durham.gov.uk

First Contact
03000 29 7979

It has **improved the quality of information submitted** and will, in the future, have the facility to be completed on-line. During the relaunch the Neglect Group identified the main services to target in addition to the planned general awareness through LSCB website and briefing sessions. A marketing evaluation noted the very smooth transition – **minimum fuss, maximum impact**.



Learning Point

Neglect Video: Michelle's Story
This is the story of Michelle and her experience of neglect as she was growing up. Click the picture to watch the video.



Where the **right support and intervention** is provided to a child or young person it can have a dramatic effect on them and their life opportunities.

*Thank you for **everything you have done for me**, you have helped me so much. Yes I know it's your job but you have **changed my life**.*

*You have watch me grow from a little girl into a stropky teenager, **I like myself** a lot more now. I still **write in my diary** how my day has been.*

*We have had **many ups and downs** where I may have disagreed with you but in the end I know it's **because you wanted what was best for me**.*

I will never forget you.

*Dear Everyone, I just want to say a huge **thank you** for helping our Mam and Dad **get us home** and I know **I am going to be happy** now. I am looking forward to **spending time** with Mam and Dad and coming to visit you too.*

*Thank you to my Nannie and Grandad **for looking after us** for the last few months.*

(Read out at a Family Group Conference)



Durham LSCB recognise that although good progress has been delivered by services to tackle neglect we need to **continue this focus** to support children and young people who suffer the consequences of growing up in neglectful circumstances.

 **More Information:** Find out more information about [Neglect](#)

Priority 4 – Empowering Young People

What is Empowering Young People?

- To increase the **voice of the child** to make sure that services take **young people's views and opinions** into account when they plan services
- Providing **education, resilience and 'up-skilling'** opportunities for young people in **safeguarding and risk awareness**
- Staff working with children and young people want to know **what they think** and how things can be made **better for them**



As part of the Children Commissioner's Takeover Challenge we have again worked with young people to develop our **Annual Report for Young People**. It provides safeguarding information from a young person's perspective.

We have **directly engaged with a range of young people** to provide the content, while groups within schools and the police cadets have acted as an editor's group.



Our work with children and young people continues to be recognised by **'Investing In Children'** as good practice.



To increase young people's awareness of safeguarding issues we have developed and piloted an innovative **interactive education package** that can be used in a wide variety of setting such as schools PHSE sessions, colleges and youth centres.

The **Safeguarding Education Toolkit** will be rolled out in the academic year 2018/19.



We continue to increase the **visibility and voice of the child** and this year we have focused on improving the influence of children in the Child Protection processes. We have worked with the Youth Advocacy Service (NYAS) and the IRO service in developing new approaches to engaging young people in the conference process.

In 2018/19 we will focus work on **cyberbullying and online abuse** in response to continued concerns raised in the annual Student Voice survey undertaken by Durham County Council.



Learning Point

Listen to Amy-Louise shares her story about being bullied online.



6. Performance Monitoring and Quality Assurance

Durham LSCB continually monitors the quality, timeliness and effectiveness of multi-agency practice through the Performance Management Framework.

Where gaps are identified, implications for the LSCB are considered and any agreed actions are monitored through the **LSCB risk register** and challenge log.

The LSCB sub groups (align to priorities) have an agreed action plan and performance scorecard. Performance and progress is reported at the sub group level and collated through the Quality and Performance Group up to the LSCB Board to monitored and challenge.

Ongoing Quality Assurance

- Monitor **partner compliance** with the statutory requirement to have effective safeguarding arrangements in place (Section 11)
- Carry out **multi-agency audits** and identify lessons to be learned and make recommendations for future improvement and feeding into LSCB training
- Multi-agency audit reports to inform the LSCB Board of the **quality of work** being undertaken and its impact on outcomes for individual children and young people
- Overview of **multi-audits** to monitor and review practice
- The use of a series of **performance scorecards**



We host learning events where key messages and the lessons learned from the published Serious Case Reviews undertaken are shared with practitioners and agencies.

(Neglect Conference March 2018)

Serious Case Reviews are published on the Durham LSCB website for a period of 12 months. There are currently **two published Serious Case Reviews**.

Outcomes and findings feed into our performance structures to promote a culture of **continuous learning and improvement** across the partner agencies of the LSCB.

The **Child Death Overview Panel** for Durham and Darlington share their key learning from child deaths. They monitor and challenge agencies for the completion of recommended identified actions and publish a separate annual report. Find out more information about [Child Death Reviews](#).

Multi-agency Audits

Last year the LSCB introduced a **web-based auditing system**.

This has dramatically reduced demands on partner's administration function during audit participation while at the same time sustaining the quality of responses.

A Section 11 Audit is Durham LSCB's primary audit to examine the safeguarding arrangements within agencies and provides the Board with assurance that agencies are doing what they can to ensure the safety and welfare of children and young people.

The Section 11 audit conducted in 2016/17 included responses from GPs for the first time. Agencies identified a total of **31 separate actions** compiled into a Section 11 action plan and is monitored through the Quality and Performance Group.

To free up resources to support the JTAI audits the LSCB Board agreed to conduct Section 11 audits on a **two yearly cycle** with the next Section 11 audit to be planned in 2018/19.

Other multi-agency audits undertaken in 2017/18

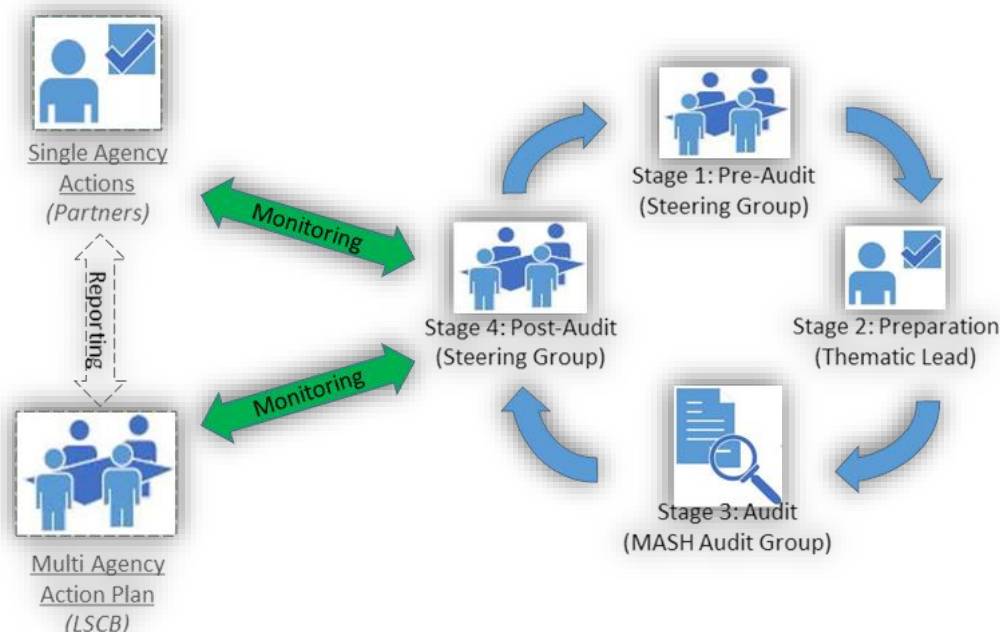
- Child Sexual Exploitation Cases
- Toxic Quartet (Domestic Abuse, Substance Misuse, Mental Health, Parental learning capacity)
- Home Environment Assessment Tool
- Practitioner Survey
- Implementation of Early Help


Joint Targeted Area Inspections

Responding to the introduction of Joint Targeted Area Inspections (JTAI) the LSCB Board have agreed to **align their audit programme** to reflect the planned themes audits of the JTAI. Not only does this still allow us to monitor and review practice it also enables agencies to prepare staff to be inspection ready.

Multi-Agency Joint Audit Process

We have developed a joint audit process and are part of the JTAI Steering Group.



 **More Information:** Find out more information about [Performance Management and S11 Audit](#)

The Use of Restraint in Secure Settings

In conjunction with Durham County Council, Durham LSCB monitors the use of restraint at Aycliffe Secure Services Centre. Many of the young people are placed there by Local Authorities and Courts outside of the Durham area. Since 2011 and in line with 'Working Together' guidance we have reported on the use of restraint.

County Durham is amongst a small number of Local Authorities who have secure services within its boundaries.

Aycliffe Secure Services Centre houses a changing population of young people (aged 11-17) with complex and challenging behaviours. The Young People have been referred through the courts because they are a risk to themselves or others, or because there is a concern about their involvement with criminal activities.

Injuries as result of restraint are graded using a set criteria

- **Level 1 – Minor Injury** - such as red marks on the skin, welts, superficial cuts and scratches, bruises which do not require medical treatment, including first aid
- **Level 2 – Minor Injury** - such as significant cuts, scratches, grazes, bloody noses, concussion, serious bruising and sprains where medical treatment is given by staff/nurse
- **Level 3 – Serious Injury requiring hospital treatment** - includes serious cuts, fractures, loss of consciousness and damage to internal organs

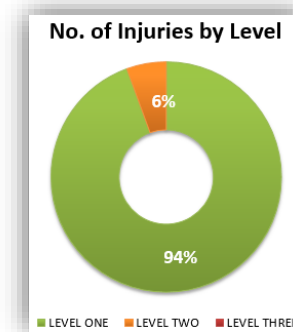
A robust Restraint Minimisation Strategy has seen the implementation of a range of alternative approaches to minimise the

use and impact of restraint. As a result the majority of injuries are graded at Level 1.

There were a total of **531 incidents which required restraint** during 2017/18. This is a **reduction of 198** incidents compared to last year. There were **108 injuries as a result of a restraint** incident in 2017/18. This is an **increase of 33 injuries** compared to the previous year. This is a ratio of 1 injury to every 5 restraints.


Analysis shows an increased level of restraint and associated injury occurred in December and January. This was due to a high level of change in the makeup of the young people accommodated during that time and the opening of an additional unit. This created an unpredictability within peer groups with **36% of all injuries occurring in this period**. From February 2018 the rate of intervention and injury has reduced to below the monthly average for the year.

94% of injuries were graded at Level 1, with the remaining **6% at Level 2**.



There were no Level 3 restraint related injuries.

Throughout 2017/18 a Senior Manager from the Secure Centre has provided a quarterly restraint report to the LSCB's Quality and Performance sub group and **plans for further scrutiny of individual incidents** are in place for 2018/19.

 **More Information:** Find out more information about [Aycliffe Secure Services Centre](#)

Serious Case Reviews

Durham LSCB have instigated **six** Serious Case Reviews in 2017/18 and published two Serious Case Reviews Overview Reports. We have delivered seven Learning Lessons events for practitioners; with two other specific information sharing events covering Multi-Agency Public Protection Arrangements (MAPPA).

Recurrent themes of published SCRs

- Concealed or Denied Pregnancy
- Parental Substance Misuse
- Recognising and responding to Neglect and understanding its impact on Children and Young People
- The effectiveness of multi-agency Team Around the Family (TAF) arrangements and assessments
- Recognising 'Did not attend' notifications as 'Was Not Brought to Appointments' issues
- Blockages in Communication and Information Sharing

Learning Lessons events provide time for professional and **critical reflection of key messages** of published Serious Case Reviews. This year we have developed **new learning materials** covering published Serious Case Reviews that allow managers and staff to deliver wider agency sharing of the learning within supervisions, team briefings and staff meetings.




The LSCB continue to implement the recommendations from Serious Case Reviews. Action plans are monitored by the LSCB Business Unit and **reviewed by the LSCB Board** through the six-monthly update report.

We will continue to host a range of **themed learning conferences** following Serious Case Reviews publication to contribute to the professional development of staff and improve their understanding of local safeguarding concerns and themes.

The transitional arrangements that will occur in 2018/19 from the system of Serious Case Reviews to the new national and local review arrangements are described on [Page 8](#) of this document.



 **More Information:** Find out more information about [Serious Case Reviews](#)

Policy and Procedures

The online version of the Durham LSCB Multi-Agency Child Protection Procedures has been live since January 2017. It provides **a web based solution** that is fully searchable and allows the user to access content from a wide range of devices.

We undertake reoccurring **six-monthly reviews** to keep the procedures up-to-date with local and national changes.

New sections added have included:

- Dangerous Dogs and Safeguarding Children
- Voice of the Child Good Practice Guidance
- Modern Slavery
- Surrogacy
- Concealed / Denied Pregnancy
- Child Sexual Abuse in the Family Environment
- Managing Individuals who Pose a Risk to Children

Website link - www.proceduresonline.com/durham/scb

Professionals should add the link above into work related phones, smartphones, tablets and computers to link directly to the procedures when needed.



Durham LSCB
Child Protection Procedures

The online procedures provide a web based solution that is fully searchable and allows the user to access the content from a wide range of devices.

[Find Out More](#)

Other procedures and guidance updated in 2017/18

- New Tackling Neglect Strategy
- Updated Neglect Practice Guidance
- Updated Thresholds Document
- New Children's Services Referral Form
- Updated Home Environment Risk Assessment Tool (HEAT) and Guidance
- New HEAT Analysis and Action Plan
- Updated Children and Families Outcomes Framework and Practice Toolkit

Independent Inquiry into Child Sexual Abuse

We have engaged with the Independent Inquiry into Child Sexual Abuse to supply information on **the work we do to protect children**.

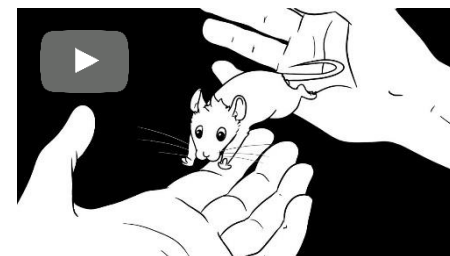
In addition we have actively promoted the

Truth Project; this offers the opportunity for victims and survivors to share their experience and be respectfully heard and acknowledged. By doing so, they are helping the inquiry to better understand the long term impact of abuse.



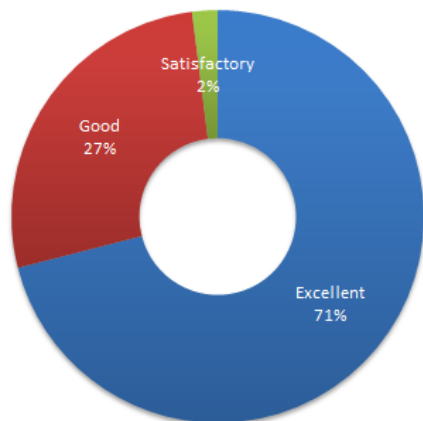
Learning Point

Watch a two minute video about the Truth Project.



7. Training and Communication

Durham LSCB offered 13 core courses in 2017/18 including Neglect, Engaging with Families; Safeguarding Processes and Child Sexual Exploitation. This was supplemented with a considerable programme of specialist training which included Psychology and Behaviour of Sex Offenders; Risk, Harm and Decision Making; Sexually Harmful Behaviour and Interviewing Sex Offenders.



- A total of **75 individual core courses** were delivered in 2017/18. The courses were attended by a total of **1,265 staff**.
- A full total of **100 training and events** were delivered and attended by a total of **4,113 staff**.

The training courses received very positive feedback with **96% of attendees** marking the training as **good or excellent**.



'In a recent referral following this course, I now feel confident in asking challenging questions at home visits.'

'The importance of looking at the situation through the child's eyes. What it's like for them living in those neglectful environments.'

E-learning Courses



Durham LSCB provide access to a full range of e-learning courses through the Virtual College **'total package'**.

This allows partners the ability to offer **up-to-date safeguarding training** to all staff through the unlimited licences available for each course. Courses include:


- Safeguarding Children and Young People from Abuse by Sexual Exploitation
- Safeguarding Children Refresher
- Awareness of Child Abuse and Neglect
- Collaborative Working: A Whole Family Approach



'This training day has helped me to understand the single assessment process and what a good assessment looks like.'

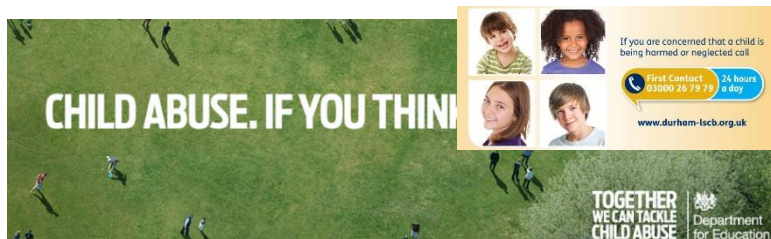
Since the new courses became available in April 2016:

- **10,069** courses have been completed
- **93%** of those completing evaluations stated they would recommend the course to a friend or colleague

 **More Information:** Find out more information about [LSCB Training Programme](#)

Marketing and Communications Activity

Marketing and communications work is delivered through the Durham LSCB Website and is the main channel to support local and national campaigns.



Printed materials to **raise awareness of safeguarding** children were distributed to contact points such as Customer Access Points, GP surgeries, Libraries, Children Centres, Day Nurseries, Police Stations and the Neighbourhood Watch Network.

The LSCB website is the main access point for safeguarding information and materials. Content is refreshed regularly with the Toolkits and Guidance for Practitioners page, Making a Referral page and Training Programme being the top three pages visited.

Website stats - April 2017 to end of March 2018

- 20,015 **users**
- 41,742 **sessions / visits**
- 115,266 **page views**



Campaigns we supported in 2017/18

- Children's Commissioner's Takeover Challenge
- Child Sexual Exploitation Awareness Day
- Independent Inquiry into Child Sexual Abuse Truth Project
- Internet Safety Day
- World Social Worker Day
- Alcohol Awareness Week
- International Day for Elimination of Violence Against Women and Girls



This year we ran a full itinerary of events during **National Safeguarding Week**. Chris Harper, who played child groomer Nathan in Coronation Street was invited to Durham to speak about his storyline and the public reaction to his role.

The events were organised by the LSCB and Harrogate & District NHS Foundation Trust Specialist Nurses in Child Protection who also provide the 0-19 Healthy Child Programme in County Durham.



Learning Point

Watch Chris speak about the storyline and how it has helped to raise the issue of child sexual exploitation across the country.



8. Future Priorities

The Durham Local Safeguarding Children Board agreed the following **priorities and priority actions for 2018/19**:

Neglect

- **Understand Neglect** – See the local picture of neglect; raise awareness and thresholds for action
- **Early Identification** – Improve the recognition and assessment of neglect
- **Effective Provision** – Refine effective and successful support that helps reduce neglect
- **Family Focus** – Use the experience of our families and the voice of the child in services

Working Together

- **Thresholds** – Strengthen agreed levels of action across the partnership
- **Focused Intervention** – Making sure children receive focused intervention
- **Remove Barriers** – Understanding the lessons learned and improving outcomes
- **Improve Information Sharing** – Remove the barriers to local sharing of information

Empowering Young People

- **Voice of the Child** – Every child has a voice within the child protection process
- **Empower Young People** – To recognise abuse, feel confident to report concerns
- **Visibility and Support** – Obtain the child's story and support is child focused
- **Peer Support** – Develop skills for young people to support other young people

Child Sexual Exploitation

- **Preventing CSE** – Making it more difficult to exploit children and young people
- **Protecting children and young people from CSE** – Identifying and safeguarding those children and young people at risk
- **Pursuing perpetrators of CSE** – Identifying, arresting and prosecuting offenders

Appendix 1 – LSCB Membership

Durham LSCB Membership

- The Board is chaired by an **independent person** commissioned by the Durham County Council Chief Executive
- **National Probation Services** – represented by the Head of Durham NPS
- **Durham Tees Valley Community Rehabilitation Company** – represented by the Head of Services County Durham and Darlington
- **North Durham, Durham Dales, Easington & Sedgefield Clinical Commissioning Groups** – represented by the Director of Nursing (*Vice-Chair of Durham LSCB*)
- **Designated Nurse Safeguarding Children and Looked After Children**
- **Designated Doctor for Safeguarding Children**
- **NHS England** – represented by the Director of Nursing for the Clinical Commissioning Groups
- **Tees, Esk & Wear Valleys NHS Foundation Trust** – represented by the Associate Director of Nursing (Safeguarding)
- **County Durham & Darlington NHS Foundation Trust** – represented by the Associate Director of Patient Experience & Safeguarding
- **North Tees & Hartlepool Hospitals NHS Foundation Trust** – represented by the General Manager Nursing and Professional Standards
- **Harrogate & District NHS Foundation Trust** – represented by the Head of Safeguarding Children
- **City Hospitals Sunderland NHS Foundation Trust** – represented by the Associate Director of Safeguarding
- **Cafcass (County Durham)** – represented by the Service Manager
- **County Durham Council** represented by:
 - Corporate Director, Children and Young People's Services
 - Head of Early Help, Assessment & Safeguarding
 - Head of Adult Care
 - Head of Education
 - Strategic Manager – Children's Services Reform & Youth Offending Service
 - Director of Public Health County Durham
 - Strategic Manager – Housing Solutions
- **National Offender Management Service** – represented by the Regional Safer Custody Lead
- **Durham Constabulary** – represented by the Force Lead for Safeguarding (Superintendent Level)
- **The Voluntary & Community Sector** – represented by the Voluntary Sector Representative (Durham Voice)

- **Schools** – represented by:
 - Durham Association of Secondary Heads
 - Durham Association of Primary Heads
 - Durham Association of Special Schools
- **Further Education** – represented by:
 - Head of Student Services, Bishop Auckland College
 - Advice Support Careers Manager, New College Durham
- **Lay Members** – represented by three members of the community whose remit is to challenge the LSCB on the accessibility by the public, children and young people of its plans and procedures
- **Lead Member** – represented by the Portfolio Holder for Children and Young People's Services (participant observer)
- **Faith Communities** – represented by the Safeguarding Lead for Durham Diocese

LSCB Advisors

The Board is advised by:

- A member of Durham County Council Corporate & Legal Services nominated as the Board's legal advisor
- The Durham LSCB Business Manager
- Head of Partnerships & Engagement, Durham County Council
- Strategic Manager – Partnerships, Durham County Council

Contact Details

Durham LSCB	03000 265 770
Durham County Council	03000 260 000
Durham Constabulary	101
County Durham & Darlington NHS Foundation Trust	0191 333 2333
North Durham Clinical Commissioning Group (CCG)	0191 389 8600
Durham Dales, Easington & Sedgefield CCG	0191 371 3222
Tees, Esk & Wear Valleys NHS Foundation Trust	01325 552 000
North Tees & Hartlepool Hospitals NHS Foundation Trust	01642 617 617
Harrogate & District NHS Foundation Trust	01423 885 959
City Hospitals Sunderland NHS Foundation Trust	0191 565 6256
NHS England North	0113 825 1609
Cafcass (County Durham)	0300 456 4000
Durham Tees Valley Community Rehabilitation Company	0808 168 4848
National Probation Service North East Division	01325 246 260
National Offender Management Service	0300 047 6325
Schools and Colleges	web link only
Voluntary and Community Sector	web link only

Appendix 2 – LSCB Staffing and Budget

Staffing

The LSCB is supported by the following officers:

- LSCB Business Manager
- LSCB Quality & Performance Coordinator
- LSCB Strategy and Development Officer
- LSCB Training Coordinator
- LSCB Admin Coordinator
- LSCB Administrator
- LSCB Admin Apprentice

LSCB Budget

The financial contributions from partner agencies are as follows:

Partner	2017/18 Contribution	2018/19 Contribution
Durham County Council	£171,604	£171,604
Clinical Commissioning Groups	£95,097	£95,097
Tees, Esk & Wear Valleys NHS Foundation Trust	£2,680	£2,680
County Durham & Darlington NHS Foundation Trust	£2,680	£2,680
North Tees & Hartlepool NHS Foundation Trust	£2,680	£2,680
Harrogate and District NHS Foundation Trust	£2,680	£2,680
Durham Constabulary	£29,285	£29,285
Durham Tees Valley Community Rehabilitation Company	£1,340	£1,340
National Probation Service	£2,032	£2,032
Further Education Colleges	£2,100	£2,100
Cafcass	£550	£550
Total	£312,728	£312,728

Durham LSCB Annual Report 2017 / 2018 - Safeguarding Children in County Durham

Durham Local Safeguarding Children Board has a statutory duty to prepare and publish an Annual Report which describes how our partners safeguard vulnerable children and young people in County Durham. Our primary responsibility is to provide a way for the local organisations that have a responsibility in respect of child welfare, to agree how they will work together to safeguard and promote the welfare of children and young people in County Durham and to ensure that they do so effectively.

The children and young people of County Durham are at the heart of what all LSCB partners do and our vision of **'Every child and young person in County Durham feels safe and grows up safe from harm'** continues to drive services forward.

This Annual Report gives an account of the Board's work over the past year to improve the safety and wellbeing of children and young people. The report reflects the activity of the LSCB and its sub groups against its priorities for 2017/18. It covers the major changes and improvements of our partners' service delivery, where they link with the Board's overall strategies and the impact it has had. It also reports on the Serious Case Reviews undertaken and identifies the priorities to be taken forward into 2018/19.

Equality and Diversity

Durham LSCB strives to promote equal access to safeguarding services, particularly for those children who are unable to communicate, due to their age, disability or first language.

Please ask us if you would like this document summarised in another language or format.



Braille



Audio



Large print

العربية Arabic	(中文 (繁體字)) Chinese	اردو Urdu
polski Polish	ਪੰਜਾਬੀ Punjabi	Español Spanish
বাংলা Bengali	हिन्दी Hindi	Deutsch German
Français French	Türkçe Turkish	Melayu Malay

Email: lscb@durham.gov.uk

Tel: 03000 265 770

LSCB Business Unit
County Hall
Durham
County Durham
DH1 5UJ

Email: lscb@durham.gov.uk

Tel: 03000 265 770

A copy of this report is available on www.durham-lscb.org.uk



Safeguarding is everyone's responsibility